

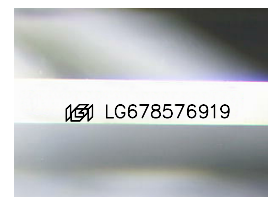
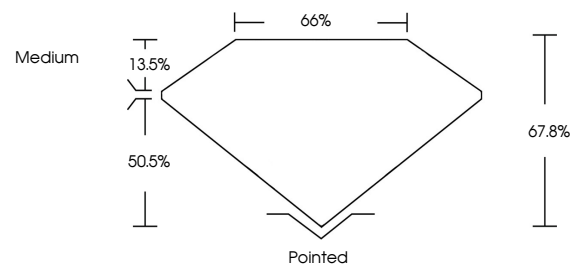


ELECTRONIC COPY

LABORATORY GROWN DIAMOND REPORT

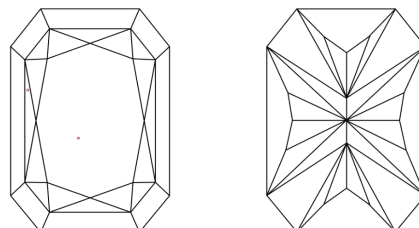
LG678576919
Report verification at lgi.org

PROPORTIONS



Sample Image Used

CLARITY CHARACTERISTICS



KEY TO SYMBOLS

Red symbols indicate internal characteristics.
Green symbols indicate external characteristics.

COLOR

D E F G H I J Faint Very Light Light

CLARITY

IF VWS¹⁻² VS¹⁻² SI¹⁻² I¹⁻³

Internally Flawless	Very Very Slightly Included	Very Slightly Included	Slightly Included	Included
---------------------	-----------------------------	------------------------	-------------------	----------

LABORATORY GROWN DIAMOND REPORT



January 30, 2025

IGI Report Number **LG678576919**Description **LABORATORY GROWN DIAMOND**

Shape and Cutting Style

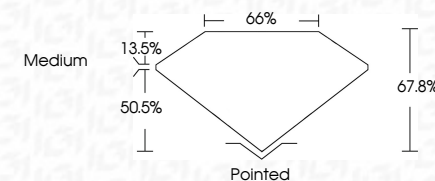
Measurements **11.84 X 8.54 X 5.79 MM**

GRADING RESULTS

Carat Weight **5.09 CARATS**

Color Grade D

Clarity Grade VS 1



ADDITIONAL GRADING INFORMATION

Polish **EXCELLENT**Symmetry **EXCELLENT**Fluorescence NONEInscription(s) LG678576919

Comments: This Laboratory Grown Diamond was created by Chemical Vapor Deposition (CVD) growth process.
Type IIa



© IGI 2020, International Gemological Institute

FD - 10 20

www.igi.org

January 30, 2025	GI Report No. LG7857/919	5.09 CARATS	D	VS 1	Polished	Comments:
GI CORNERED RECT. MODIFIED BRILLIANT				67.8%	EXCELLENT	Created by: Chemical Group. Diamond was
				66%	EXCELLENT	created by Chemical Vapor Deposition
			Medium		NONE	CVD growth process.
					689 LG7857/919	Type IIa
1.184 X .654 X 5.79 MM	Color Weight	Color Grade	Clarity Grade	Depth	Table	
					Grade	
					Quiet	
					Polish	
					Symmetry	
					Fluorescence	
					Inscriptions(s)	