

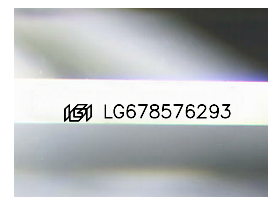
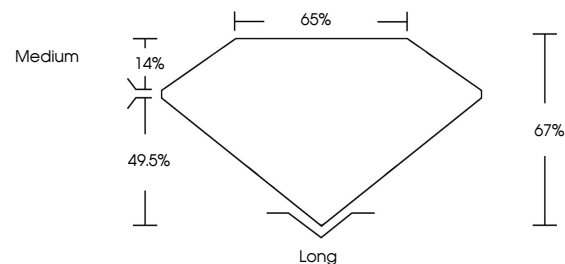


ELECTRONIC COPY

LABORATORY GROWN DIAMOND REPORT

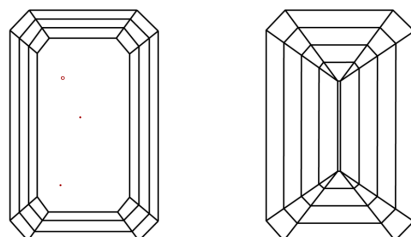
LG678576293
Report verification at lgi.org

PROPORTIONS



Sample Image Used

CLARITY CHARACTERISTICS



KEY TO SYMBOLS

Red symbols indicate internal characteristics.
Green symbols indicate external characteristics.

COLOR

D E F G H I J Faint Very Light Light

CLARITY

IF	VS ¹⁻²	VS ¹⁻²	SI ¹⁻²	I ¹⁻³
Internally Flawless	Very Very Slightly Included	Very Slightly Included	Slightly Included	Included

LABORATORY GROWN DIAMOND REPORT



January 25, 2025

IGI Report Number **LG678576293**Description **LABORATORY GROWN DIAMOND**Shape and Cutting Style **EMERALD CUT**

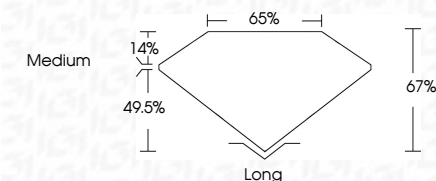
Measurements **6.86 X 4.94 X 3.31 MM**

GRADING RESULTS

Carat Weight 1.08 CARAT

Color Grade D

Clarity Grade VS 1



ADDITIONAL GRADING INFORMATION

Polish **EXCELLENT**Symmetry **EXCELLENT**Fluorescence **NONE**Inscription(s)  LG678576293

Comments: This Laboratory Grown Diamond was created by Chemical Vapor Deposition (CVD) growth process.
Type IIa



© IGI 2020, International Gemological Institute

FD - 10 20

www.igi.org

THIS DOCUMENT WAS PRODUCED WITH THE FOLLOWING SECURITY MEASURES: SPECIAL DOCUMENT PAPER, INK SCREENS, WATERMARK, BACKGROUND DESIGNS, HOLOGRAM AND OTHER SECURITY FEATURES NOT LISTED AND DO EXCEED DOCUMENT SECURITY INDUSTRY GUIDELINE

January 25, 2025
GI Report No LG678576293

GI Report No L657857/2593	5.60 X 4.94 X 3.31 MM	1.08 CARAT
GRAIN CUT	Color Weight	D
	Color Grade	VS 1
	Clarity Grade	67%
	Depth	65%
	Table	Medium
	Girdle	Long
	Culet	EXCELLENT
	Polish	EXCELLENT
	Symmetry	NONE
	Fluorescence	see L657857/2593
	Comments(s)	

Comments:
This Laboratory Grown Diamond was created by Chemical Vapor Deposition (CVD) growth process.