



**ELECTRONIC COPY**

## LABORATORY GROWN DIAMOND REPORT

|                         |                          |
|-------------------------|--------------------------|
| February 12, 2025       |                          |
| IGI Report Number       | LG678575558              |
| Description             | LABORATORY GROWN DIAMOND |
| Shape and Cutting Style | ROUND BRILLIANT          |
| Measurements            | 8.20 - 8.24 X 4.86 MM    |

## GRADING RESULTS

|               |                    |
|---------------|--------------------|
| Carat Weight  | 2.00 CARATS        |
| Color Grade   | FANCY INTENSE PINK |
| Clarity Grade | VS 1               |
| Cut Grade     | IDEAL              |

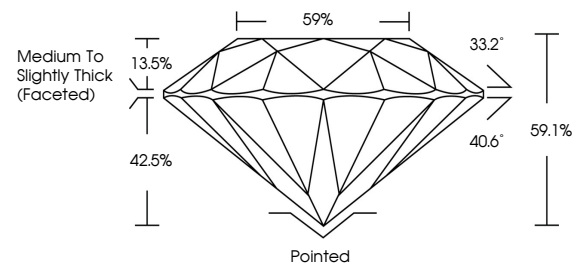
### ADDITIONAL GRADING INFORMATION

|                |                                                                                                 |
|----------------|-------------------------------------------------------------------------------------------------|
| Polish         | EXCELLENT                                                                                       |
| Symmetry       | VERY GOOD                                                                                       |
| Fluorescence   | SLIGHT                                                                                          |
| Inscription(s) |  LG678575558 |

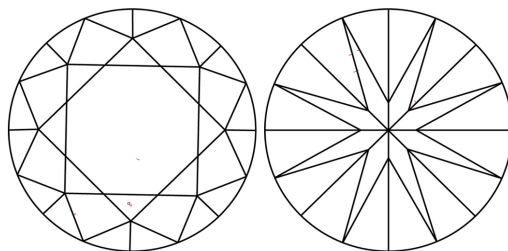
Comments: This Laboratory Grown Diamond was created by Chemical Vapor Deposition (CVD) growth process.  
Indications of post-growth treatment.

LG678575558  
Report verification at [igi.org](https://igi.org)

## PROPORTIONS

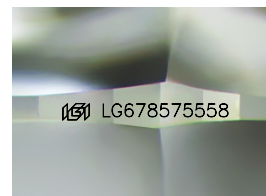


## CLARITY CHARACTERISTICS



## KEY TO SYMBOLS

Red symbols indicate internal characteristics.  
Green symbols indicate external characteristics.



Sample Image Used

**COLOR**

D E F G H I J Faint Very Light Light

## CLARITY

IF WS<sup>1-2</sup> VS<sup>1-2</sup> SI<sup>1-2</sup> |<sup>1-3</sup>

|                        |                                |                           |                      |          |
|------------------------|--------------------------------|---------------------------|----------------------|----------|
| Internally<br>Flawless | Very Very<br>Slightly Included | Very<br>Slightly Included | Slightly<br>Included | Included |
|------------------------|--------------------------------|---------------------------|----------------------|----------|

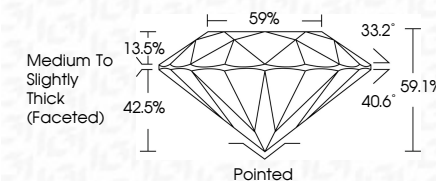
## LABORATORY GROWN DIAMOND REPORT



|                         |                          |
|-------------------------|--------------------------|
| February 12, 2025       |                          |
| IGI Report Number       | LG678575558              |
| Description             | LABORATORY GROWN DIAMOND |
| Shape and Cutting Style | ROUND BRILLIANT          |
| Measurements            | 8.20 - 8.24 X 4.86 MM    |

## GRADING RESULTS

|               |                    |
|---------------|--------------------|
| Carat Weight  | 2.00 CARATS        |
| Color Grade   | FANCY INTENSE PINK |
| Clarity Grade | VS 1               |
| Cut Grade     | IDEAL              |



### ADDITIONAL GRADING INFORMATION

|                                                                                                                                                            |                                                                                                 |
|------------------------------------------------------------------------------------------------------------------------------------------------------------|-------------------------------------------------------------------------------------------------|
| Polish                                                                                                                                                     | EXCELLENT                                                                                       |
| Symmetry                                                                                                                                                   | VERY GOOD                                                                                       |
| Fluorescence                                                                                                                                               | SLIGHT                                                                                          |
| Inscription(s)                                                                                                                                             |  LG678575558 |
| <p>Comments: This Laboratory Grown Diamond was created by Chemical Vapor Deposition (CVD) growth process.</p> <p>Indications of post-growth treatment.</p> |                                                                                                 |



IG



© IGI 2020, International Gemological Institute

FD - 10 20



THIS DOCUMENT WAS PRODUCED WITH THE FOLLOWING SECURITY MEASURES: SPECIAL DOCUMENT PAPER, INK SCREENS, WATERMARK, BACKGROUND DESIGNS, HOLOGRAM AND OTHER SECURITY FEATURES NOT LISTED AND DO EXCEED DOCUMENT SECURITY INDUSTRY GUIDELINES

**www.igi.org**

