



**ELECTRONIC COPY**

## LABORATORY GROWN DIAMOND REPORT

LG678568033  
Report verification at [igi.org](https://igi.org)

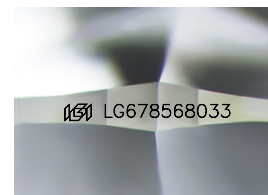
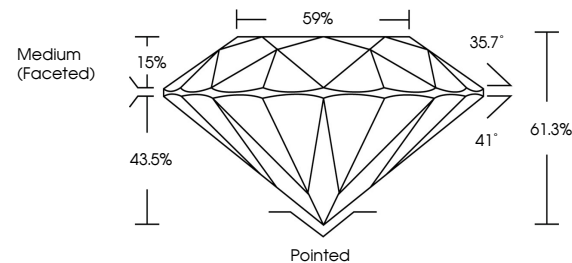
January 24, 2025	
IGI Report Number	LG678568033
Description	LABORATORY GROWN DIAMOND
Shape and Cutting Style	ROUND BRILLIANT
Measurements	8.28 - 8.34 X 5.10 MM
GRADING RESULTS	
Carat Weight	2.16 CARATS
Color Grade	E
Clarity Grade	VVS 2
Cut Grade	IDEAL

### ADDITIONAL GRADING INFORMATION

Polish	EXCELLENT
Symmetry	EXCELLENT
Fluorescence	NONE
Inscription(s)	 LG678568033

Comments: As Grown - No indication of post-growth treatment.  
This Laboratory Grown Diamond was created by High Pressure High Temperature (HPHT) growth process.  
Type II

## PROPORTIONS



Sample Image Used

**COLOR**

D E F G H I J Faint Very Light Light

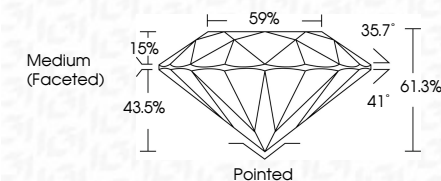
## CLARITY

IF	VS <sup>1-2</sup>	VS <sup>1-2</sup>	SI <sup>1-2</sup>	I <sup>1-3</sup>
Internally Flawless	Very Very Slightly Included	Very Slightly Included	Slightly Included	Included

## LABORATORY GROWN DIAMOND REPORT



January 24, 2025	
IGI Report Number	LG678568033
Description	LABORATORY GROWN DIAMOND
Shape and Cutting Style	ROUND BRILLIANT
Measurements	8.28 - 8.34 X 5.10 MM
GRADING RESULTS	
Carat Weight	2.16 CARATS
Color Grade	E
Clarity Grade	VVS 2
Cut Grade	IDEAL



### ADDITIONAL GRADING INFORMATION

Polish	EXCELLENT
Symmetry	EXCELLENT
Fluorescence	NONE
Inscription(s)	<del>(G)</del> LG678568033
<p>Comments: As Grown - No indication of post-growth treatment.</p> <p>This Laboratory Grown Diamond was created by High Pressure High Temperature (HPHT) growth process.</p> <p>Type II</p>	



© IGI 2020, International Gemological Institute

FD - 10 20



THIS DOCUMENT WAS PRODUCED WITH THE FOLLOWING SECURITY MEASURES: SPECIAL DOCUMENT PAPER, INK SCREENS, WATERMARK, BACKGROUND DESIGNS, HOLOGRAM AND OTHER SECURITY FEATURES NOT LISTED AND DO EXCEED DOCUMENT SECURITY INDUSTRY GUIDELINES

**www.igi.org**

January 24, 2025  
GI Report No LG678568033  
ROUND BRILLIANT

<b>CORONAL</b>	<b>2.16 CARATS</b>	<b>E</b>
<b>2.28 - 8.34 X 5.10 MM</b>	<b>VVS 2</b>	<b>Pointed</b>
<b>Coral Weight</b>	<b>IDP AL</b>	<b>EXCELLENT</b>
<b>Color Grade</b>	<b>61.9%</b>	<b>EXCELLENT</b>
<b>Clarity Grade</b>	<b>59%</b>	<b>NONE</b>
<b>Cut Grade</b>	<b>Medium (Faceted)</b>	<b>see comments</b>
<b>Depth</b>		
<b>Table</b>		
<b>Girdle</b>		
<b>Culet</b>		
<b>Polish</b>		
<b>Symmetry</b>		
<b>Fluorescence</b>		
<b>Comments:</b>		

**Comments:**  
As Grown - No indication of post-growth treatment.  
This Laboratory Grown Diamond was created by High Pressure High temperature (HPHT) growth process.