



ELECTRONIC COPY

LG678565851
Report verification at igi.org



February 6, 2025
IGI Report Number **LG678565851**
Description **LABORATORY GROWN DIAMOND**
Shape and Cutting Style **CUT CORNERED
RECTANGULAR MIXED CUT**
Measurements **7.57 X 5.66 X 3.85 MM**
GRADING RESULTS
Carat Weight **1.61 CARAT**
Color Grade **FANCY VIVID YELLOW**
Clarity Grade **VS 2**

LABORATORY GROWN DIAMOND REPORT

February 6, 2025
IGI Report Number **LG678565851**
Description **LABORATORY GROWN DIAMOND**
Shape and Cutting Style **CUT CORNERED RECTANGULAR
MIXED CUT**
Measurements **7.57 X 5.66 X 3.85 MM**

GRADING RESULTS

Carat Weight **1.61 CARAT**
Color Grade **FANCY VIVID YELLOW**
Clarity Grade **VS 2**

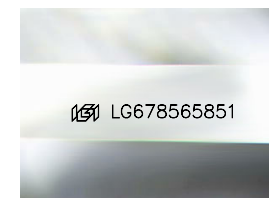
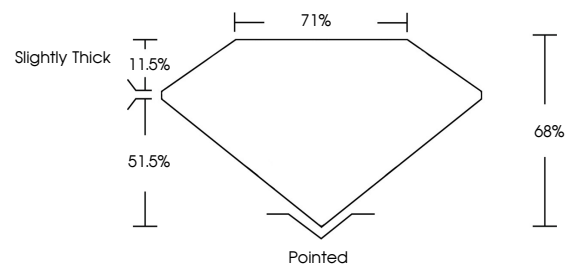
ADDITIONAL GRADING INFORMATION

Polish **EXCELLENT**
Symmetry **EXCELLENT**
Fluorescence **NONE**
Inscription(s) **IGI LG678565851**

Comments: This Laboratory Grown Diamond was created by Chemical Vapor Deposition (CVD) growth process.

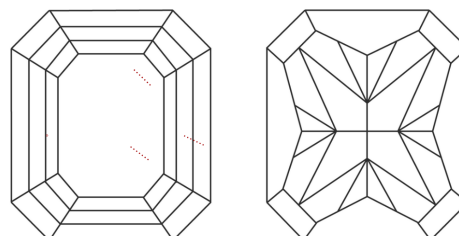
Secondary color: Brown

PROPORTIONS



Sample Image Used

CLARITY CHARACTERISTICS



KEY TO SYMBOLS

Red symbols indicate internal characteristics.
Green symbols indicate external characteristics.

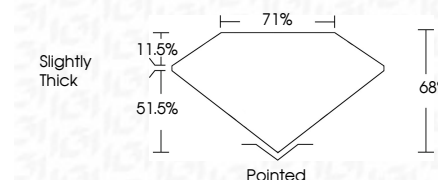
COLOR

D E F G H I J Faint Very Light Light

CLARITY

IF VS¹⁻² VS¹⁻² SI¹⁻² I¹⁻³

Internally Flawless Very Very Slightly Included Very Slightly Included Slightly Included Included



ADDITIONAL GRADING INFORMATION

Polish **EXCELLENT**
Symmetry **EXCELLENT**
Fluorescence **NONE**
Inscription(s) **IGI LG678565851**
Comments: This Laboratory Grown Diamond was created by Chemical Vapor Deposition (CVD) growth process.

Secondary color: Brown



IGI



February 6, 2025
IGI Report No. LG678565851
CUT CORNERED RECT. MIXED CUT
1.61 CARAT
FANCY VIVID YELLOW
VS 2
68%
71%
Slightly Thick
Pointed
EXCELLENT
EXCELLENT
NONE
IGI LG678565851
Comments: This Laboratory Grown Diamond was created by Chemical Vapor Deposition (CVD) growth process.
Secondary color: Brown