



ELECTRONIC COPY

LG678555644
Report verification at igi.org



January 24, 2025

IGI Report Number **LG678555644**

Description **LABORATORY GROWN DIAMOND**

Shape and Cutting Style **PEAR BRILLIANT**

Measurements **14.08 X 8.61 X 5.18 MM**

GRADING RESULTS

Carat Weight **3.65 CARATS**

Color Grade **G**

Clarity Grade **VVS 2**

January 24, 2025
IGI Report Number **LG678555644**
Description **LABORATORY GROWN DIAMOND**
Shape and Cutting Style **PEAR BRILLIANT**
Measurements **14.08 X 8.61 X 5.18 MM**

GRADING RESULTS

Carat Weight **3.65 CARATS**

Color Grade **G**

Clarity Grade **VVS 2**

ADDITIONAL GRADING INFORMATION

Polish **EXCELLENT**

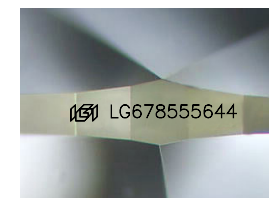
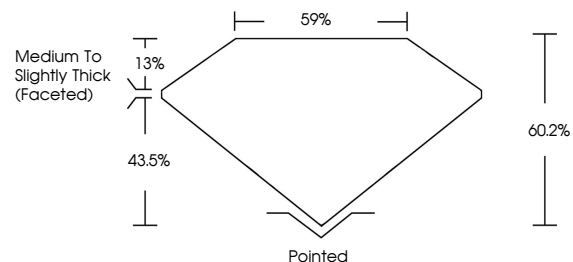
Symmetry **EXCELLENT**

Fluorescence **NONE**

Inscription(s) **LG678555644**

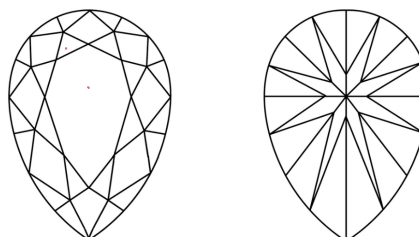
Comments: This Laboratory Grown Diamond was created by Chemical Vapor Deposition (CVD) growth process.
Type IIa

PROPORTIONS



Sample Image Used

CLARITY CHARACTERISTICS



KEY TO SYMBOLS

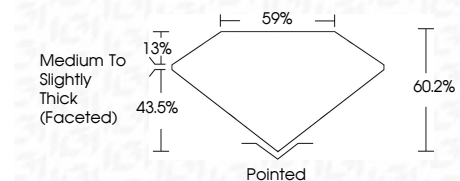
Red symbols indicate internal characteristics.
Green symbols indicate external characteristics.

COLOR

D E F G H I J Faint Very Light Light

CLARITY

| IF | VS ¹⁻² | VS ¹⁻² | SI ¹⁻² | I ¹⁻³ |
|---------------------|-----------------------------|------------------------|-------------------|------------------|
| Internally Flawless | Very Very Slightly Included | Very Slightly Included | Slightly Included | Included |



ADDITIONAL GRADING INFORMATION

Polish **EXCELLENT**

Symmetry **EXCELLENT**

Fluorescence **NONE**

Inscription(s) **LG678555644**

Comments: This Laboratory Grown Diamond was created by Chemical Vapor Deposition (CVD) growth process.
Type IIa



IGI



January 24, 2025
IGI Report No **LG678555644**
PEAR BRILLIANT

14.08 X 8.61 X 5.18 MM

Carat Weight **3.65 CARATS**
Color Grade **G**
Clarity Grade **VVS 2**
Depth **43.5%**
Table **13%**
Girdle **Medium to Slightly Thick (Faceted)**

Culet **Pointed**
Polish **EXCELLENT**
Symmetry **EXCELLENT**
Fluorescence **NONE**
Inscription(s) **LG678555644**

Comments: This Laboratory Grown Diamond was created by Chemical Vapor Deposition (CVD) growth process.
Type IIa