



**ELECTRONIC COPY**

LG678542870  
Report verification at igi.org



February 5, 2025  
IGI Report Number **LG678542870**  
Description **LABORATORY GROWN DIAMOND**  
Shape and Cutting Style **CUT CORNERED  
RECTANGULAR MIXED CUT**  
Measurements **12.46 X 9.03 X 6.41 MM**  
**GRADING RESULTS**  
Carat Weight **7.02 CARATS**  
Color Grade **FANCY VIVID PINK**  
Clarity Grade **SI 2**

**LABORATORY GROWN DIAMOND REPORT**

February 5, 2025  
IGI Report Number **LG678542870**  
Description **LABORATORY GROWN DIAMOND**  
Shape and Cutting Style **CUT CORNERED RECTANGULAR  
MIXED CUT**  
Measurements **12.46 X 9.03 X 6.41 MM**

**GRADING RESULTS**

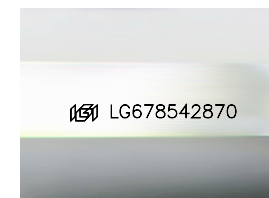
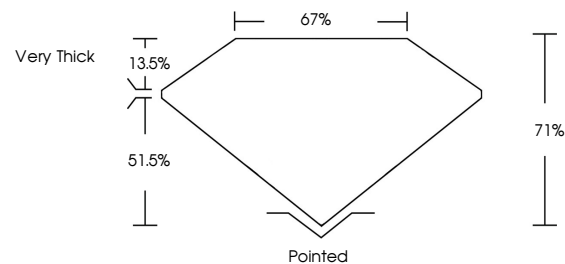
Carat Weight **7.02 CARATS**  
Color Grade **FANCY VIVID PINK**  
Clarity Grade **SI 2**

**ADDITIONAL GRADING INFORMATION**

Polish **EXCELLENT**  
Symmetry **EXCELLENT**  
Fluorescence **SLIGHT**  
Inscription(s) **IGI LG678542870**

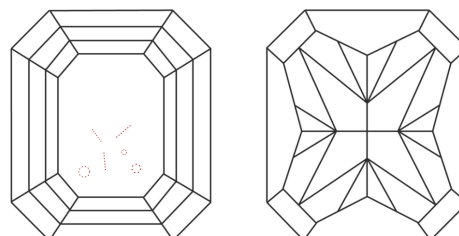
Comments: This Laboratory Grown Diamond was created by Chemical Vapor Deposition (CVD) growth process. Indications of post-growth treatment.

**PROPORTIONS**



Sample Image Used

**CLARITY CHARACTERISTICS**



**KEY TO SYMBOLS**

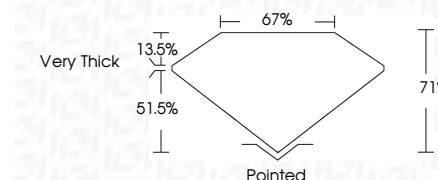
Red symbols indicate internal characteristics.  
Green symbols indicate external characteristics.

**COLOR**

D E F G H I J Faint Very Light Light

**CLARITY**

IF	VS <sup>1-2</sup>	VS <sup>1-2</sup>	SI <sup>1-2</sup>	I <sup>1-3</sup>
Internally Flawless	Very Very Slightly Included	Very Slightly Included	Slightly Included	Included



**ADDITIONAL GRADING INFORMATION**

Polish **EXCELLENT**  
Symmetry **EXCELLENT**  
Fluorescence **SLIGHT**  
Inscription(s) **IGI LG678542870**  
Comments: This Laboratory Grown Diamond was created by Chemical Vapor Deposition (CVD) growth process. Indications of post-growth treatment.



February 5, 2025  
IGI Report No **LG678542870**  
**CUT CORNERED RECT. MIXED CUT**  
**12.46 X 9.03 X 6.41 MM**  
Carat Weight **7.02 CARATS**  
Color Grade **FANCY VIVID PINK**  
Clarity Grade **SI 2**  
Depth **71%**  
Table **67%**  
Girdle **Very Thick**  
Culet **Pointed**  
Polish **EXCELLENT**  
Symmetry **EXCELLENT**  
Fluorescence **SLIGHT**  
Inscription(s) **IGI LG678542870**  
Comments: This Laboratory Grown Diamond was created by Chemical Vapor Deposition (CVD) growth process. Indications of post-growth treatment.