



ELECTRONIC COPY

LG678542780
Report verification at igi.org



February 12, 2025
IGI Report Number **LG678542780**
Description **LABORATORY GROWN DIAMOND**
Shape and Cutting Style **CUT CORNERED
RECTANGULAR MODIFIED
BRILLIANT**
Measurements **10.04 X 7.47 X 4.79 MM**
GRADING RESULTS
Carat Weight **3.51 CARATS**
Color Grade **FANCY VIVID PINK**
Clarity Grade **SI 1**

February 12, 2025
IGI Report Number **LG678542780**
Description **LABORATORY GROWN DIAMOND**
Shape and Cutting Style **CUT CORNERED RECTANGULAR
MODIFIED BRILLIANT**
Measurements **10.04 X 7.47 X 4.79 MM**

GRADING RESULTS

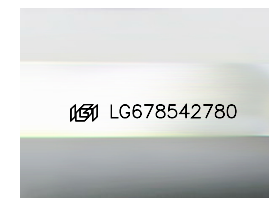
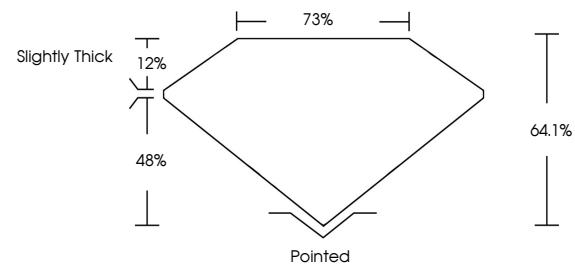
Carat Weight **3.51 CARATS**
Color Grade **FANCY VIVID PINK**
Clarity Grade **SI 1**

ADDITIONAL GRADING INFORMATION

Polish **EXCELLENT**
Symmetry **EXCELLENT**
Fluorescence **SLIGHT**
Inscription(s) **IGI LG678542780**

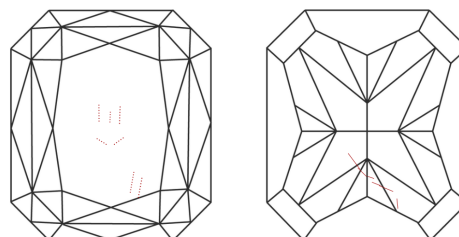
Comments: This Laboratory Grown Diamond was created by Chemical Vapor Deposition (CVD) growth process. Indications of post-growth treatment.

PROPORTIONS



Sample Image Used

CLARITY CHARACTERISTICS



KEY TO SYMBOLS

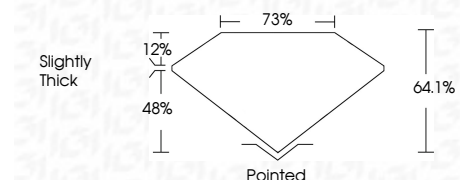
Red symbols indicate internal characteristics.
Green symbols indicate external characteristics.

COLOR

D E F G H I J Faint Very Light Light

CLARITY

IF	VS ¹⁻²	VS ¹⁻²	SI ¹⁻²	I ¹⁻³
Internally Flawless	Very Very Slightly Included	Very Slightly Included	Slightly Included	Included



ADDITIONAL GRADING INFORMATION

Polish **EXCELLENT**
Symmetry **EXCELLENT**
Fluorescence **SLIGHT**
Inscription(s) **IGI LG678542780**
Comments: This Laboratory Grown Diamond was created by Chemical Vapor Deposition (CVD) growth process. Indications of post-growth treatment.



February 12, 2025
IGI Report No LG678542780
CUT CORNERED RECT. MODIFIED BRILLIANT
10.04 X 7.47 X 4.79 MM
3.51 CARATS
FANCY VIVID PINK
SI 1
64.1%
75%
Slightly Thick
Pointed
EXCELLENT
EXCELLENT
SLIGHT
IGI LG678542780

Comments: This Laboratory Grown Diamond was created by Chemical Vapor Deposition (CVD) growth process. Indications of post-growth treatment.