

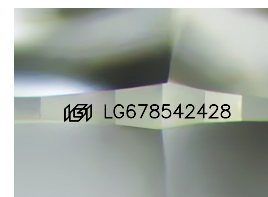
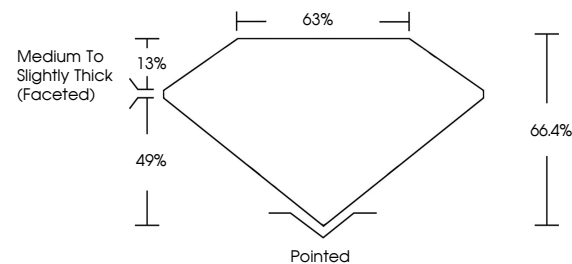


ELECTRONIC COPY

LABORATORY GROWN DIAMOND REPORT

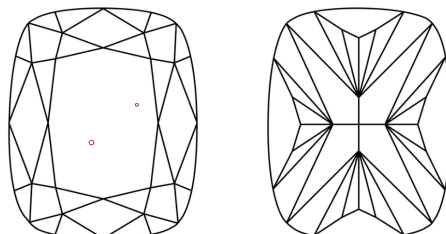
LG678542428
Report verification at igi.org

PROPORTIONS



Sample Image Used

CLARITY CHARACTERISTICS



KEY TO SYMBOLS

Red symbols indicate internal characteristics.
Green symbols indicate external characteristics.

COLOR

D E F G H I J Faint Very Light Light

CLARITY

IF	VS ¹⁻²	VS ¹⁻²	SI ¹⁻²	I ¹⁻³
Internally Flawless	Very Very Slightly Included	Very Slightly Included	Slightly Included	Included

LABORATORY GROWN DIAMOND REPORT



January 23, 2025

IGI Report Number **LG678542428**Description **LABORATORY GROWN DIAMOND**Shape and Cutting Style **CUSHION BRILLIANT**

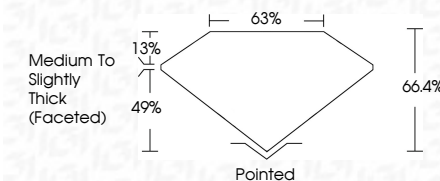
Measurements **8.21 X 5.92 X 3.93 MM**

GRADING RESULTS

Carat Weight **1.55 CARAT**

Color Grade D

Clarity Grade VS 2



ADDITIONAL GRADING INFORMATION

Polish EXCELLENT

Symmetry **EXCELLENT**Fluorescence **NONE**Inscription(s) LG678542428

Comments: This Laboratory Grown Diamond was created by Chemical Vapor Deposition (CVD) growth process.
Type IIa



© IGI 2020, International Gemological Institute

FD - 10 20

www.igi.org

THIS DOCUMENT WAS PRODUCED WITH THE FOLLOWING SECURITY MEASURES: SPECIAL DOCUMENT PAPER, INK SCREENS, WATERMARK BACKGROUND DESIGNS, HOLOGRAM AND OTHER SECURITY FEATURES NOT LISTED AND DO EXCEED DOCUMENT SECURITY INDUSTRY GUIDELINES

January 23, 2025
GI Report No LG678542428

GSH Report No LG579542/2028	
CUSHION BRILLIANT	
Carat Weight	1.55 CARAT
Color Grade	D
Clarity Grade	VS 2
Depth	66.4%
Table	63%
Grade	Medium To Slightly Thick (focused)
Quiet	Polished
Polish	EXCELLENT
fluorescence	EXCELLENT
fluorescence	NONE
fluorescence	sent LG579542/2028

Comments:
This Laboratory Grown Diamond was created by Chemical Vapor Deposition (CVD) growth process.