

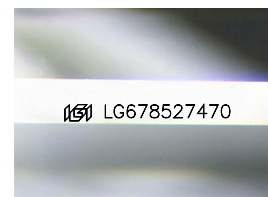
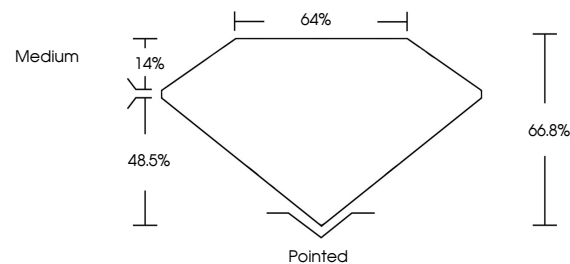


**ELECTRONIC COPY**

## LABORATORY GROWN DIAMOND REPORT

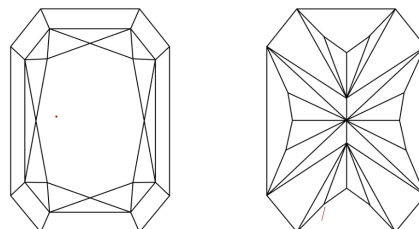
LG678527470  
Report verification at [igi.org](https://igi.org)

## PROPORTIONS



Sample Image Used

## CLARITY CHARACTERISTICS



## KEY TO SYMBOLS

Red symbols indicate internal characteristics.  
Green symbols indicate external characteristics.

## COLOR

D E F G H I J Faint Very Light Light

## CLARITY

IF	VS <sup>1-2</sup>	VS <sup>1-2</sup>	SI <sup>1-2</sup>	I <sup>1-3</sup>
Internally Flawless	Very Very Slightly Included	Very Slightly Included	Slightly Included	Included

## LABORATORY GROWN DIAMOND REPORT



January 23, 2025

IGI Report Number **LG678527470**Description **LABORATORY GROWN DIAMOND**

Shape and Cutting Style

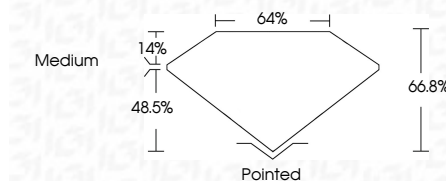
Measurements **8.90 X 6.24 X 4.17 MM**

## GRADING RESULTS

Carat Weight **2.05 CARATS**

Color Grade D

Clarity Grade VS 1



### ADDITIONAL GRADING INFORMATION

Polish EXCELLENT

Symmetry **EXCELLENT**Fluorescence **NONE**Inscription(s)  LG678527470

Comments: This Laboratory Grown Diamond was created by Chemical Vapor Deposition (CVD) growth process.  
Type IIa



© IGI 2020, International Gemological Institute

FD - 10 20

**www.igi.org**

THIS DOCUMENT WAS PRODUCED WITH THE FOLLOWING SECURITY MEASURES: SPECIAL DOCUMENT PAPER, INK SCREENS, WATERMARK, BACKGROUND DESIGNS, HOLOGRAM AND OTHER SECURITY FEATURES NOT LISTED AND DO EXCEED DOCUMENT SECURITY INDUSTRY GUIDELINE

January 23, 2025	
GI Report No. LG5782Z70	
CU COVERED RECT. MODIFIED BRILLIANT	
0.90 X 0.24 X 4.17 MM	
Carat Weight	2.05 CARATS
Color Grade	D
Clarity Grade	VS 1
Depth	66.5%
Table	64%
Girdle	Medium
Culet	Pointed
Polish	EXCELLENT
Symmetry	EXCELLENT
Fluorescence	NONE
Inscriptions(s)	6891 LG5782Z70

Comments:  
 This is a Fancy Crown Diamond was  
 created by Chemical Vapor Deposition  
 (CVD) growth process.  
 Type IIa