

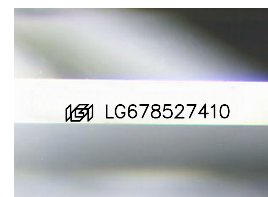
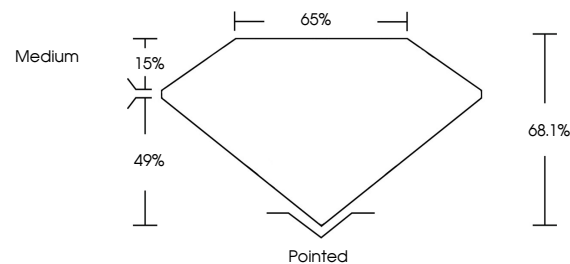


ELECTRONIC COPY

LABORATORY GROWN DIAMOND REPORT

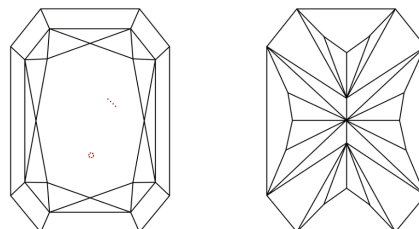
LG678527410
Report verification at igi.org

PROPORTIONS



Sample Image Used

CLARITY CHARACTERISTICS



KEY TO SYMBOLS

Red symbols indicate internal characteristics.
Green symbols indicate external characteristics.

COLOR

D E F G H I J Faint Very Light Light

CLARITY

IF	VS ¹⁻²	VS ¹⁻²	SI ¹⁻²	I ¹⁻³
Internally Flawless	Very Very Slightly Included	Very Slightly Included	Slightly Included	Included

LABORATORY GROWN DIAMOND REPORT



January 22, 2025

IGI Report Number **LG678527410**Description **LABORATORY GROWN DIAMOND**

Shape and Cutting Style

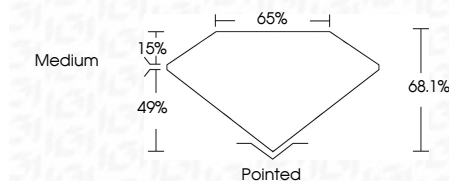
Measurements **7.79 X 5.76 X 3.92 MM**

GRADING RESULTS

Carat Weight **1.55 CARAT**

Color Grade **F**

Clarity Grade VS 1



ADDITIONAL GRADING INFORMATION

Polish EXCELLENT

Symmetry **EXCELLENT**Fluorescence **NONE**Inscription(s)  LG678527410

Comments: This Laboratory Grown Diamond was created by Chemical Vapor Deposition (CVD) growth process.
Type IIa



© IGI 2020, International Gemological Institute

FD - 10 20

www.igi.org

THIS DOCUMENT WAS PRODUCED WITH THE FOLLOWING SECURITY MEASURES: SPECIAL DOCUMENT PAPER, INK SCREENS, WATERMARK, BACKGROUND DESIGNS, HOLOGRAM AND OTHER SECURITY FEATURES NOT LISTED AND DO EXCEED DOCUMENT SECURITY INDUSTRY GUIDELINES

January 22, 2025	CU Report No. LG578527410	CU COVERED RECT. MODIFIED BRILLIANT
		7.79 X 5.76 X 3.92 MM
Carat Weight	1.55 CARAT	
Color Grade	F	
Clarity Grade	VS 1	
Depth	68.1%	
Table	65%	
Girdle	Medium	
Culet	Pointed	
Polish	EXCELLENT	
Symmetry	EXCELLENT	
Fluorescence	NONE	
Inscriptions(s)	6891 LG578527410	

Comments: This is a Fancy Crown Diamond was created by Chemical Vapor Deposition (CVD) growth process.
Type IIa