



ELECTRONIC COPY

LG678525569
Report verification at igi.org



January 24, 2025
IGI Report Number **LG678525569**
Description **LABORATORY GROWN DIAMOND**
Shape and Cutting Style **CUSHION MODIFIED BRILLIANT**
Measurements **8.17 X 7.34 X 4.73 MM**
GRADING RESULTS
Carat Weight **2.58 CARATS**
Color Grade **FANCY YELLOW**
Clarity Grade **VS 1**

LABORATORY GROWN DIAMOND REPORT

January 24, 2025
IGI Report Number **LG678525569**
Description **LABORATORY GROWN DIAMOND**
Shape and Cutting Style **CUSHION MODIFIED BRILLIANT**
Measurements **8.17 X 7.34 X 4.73 MM**

GRADING RESULTS

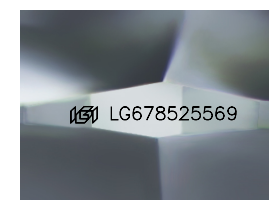
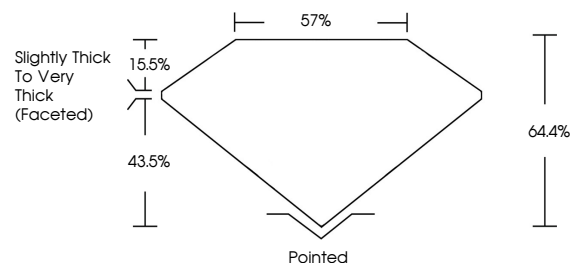
Carat Weight **2.58 CARATS**
Color Grade **FANCY YELLOW**
Clarity Grade **VS 1**

ADDITIONAL GRADING INFORMATION

Polish **EXCELLENT**
Symmetry **EXCELLENT**
Fluorescence **NONE**
Inscription(s) **IGI LG678525569**

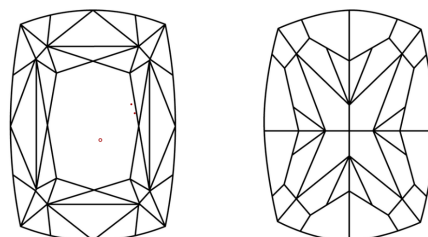
Comments: This Laboratory Grown Diamond was created by Chemical Vapor Deposition (CVD) growth process.

PROPORTIONS



Sample Image Used

CLARITY CHARACTERISTICS



KEY TO SYMBOLS

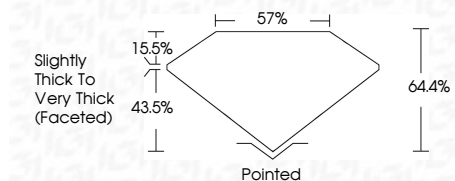
Red symbols indicate internal characteristics.
Green symbols indicate external characteristics.

COLOR

D E F G H I J Faint Very Light Light

CLARITY

IF	VS ¹⁻²	VS ¹⁻²	SI ¹⁻²	I ¹⁻³
Internally Flawless	Very Very Slightly Included	Very Slightly Included	Slightly Included	Included



ADDITIONAL GRADING INFORMATION

Polish **EXCELLENT**
Symmetry **EXCELLENT**
Fluorescence **NONE**
Inscription(s) **IGI LG678525569**
Comments: This Laboratory Grown Diamond was created by Chemical Vapor Deposition (CVD) growth process.



January 24, 2025
IGI Report No **LG678525569**
CUSHION MODIFIED BRILLIANT
8.17 X 7.34 X 4.73 MM
Carat Weight **2.58 CARATS**
Color Grade **FANCY YELLOW**
Clarity Grade **VS 1**
Depth **64.4%**
Table **57%**
Girdle **Slightly Thick To Very Thick (Faceted)**
Culet **Pointed**
Polish **EXCELLENT**
Symmetry **EXCELLENT**
Fluorescence **NONE**
Inscription(s) **IGI LG678525569**

Comments: This Laboratory Grown Diamond was created by Chemical Vapor Deposition (CVD) growth process.