

ELECTRONIC COPY

LABORATORY GROWN DIAMOND REPORT

January 30, 2025	
IGI Report Number	LG678524863
Description	LABORATORY GROWN DIAMOND
Shape and Cutting Style	CUT CORNERED RECTANGULAR MODIFIED BRILLIANT
Measurements	12.20 X 8.61 X 5.81 MM

GRADING RESULTS

Carat Weight	5.10 CARATS
Color Grade	E
Clarity Grade	VS 1

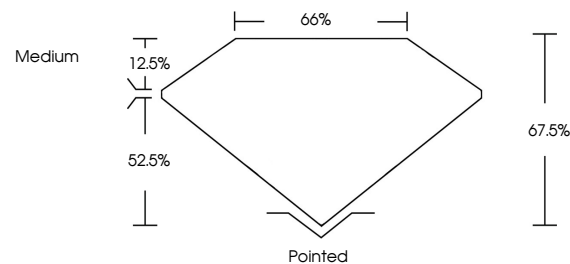
ADDITIONAL GRADING INFORMATION

Polish	EXCELLENT
Symmetry	EXCELLENT
Fluorescence	NONE
Inscription(s)	 LG678524863

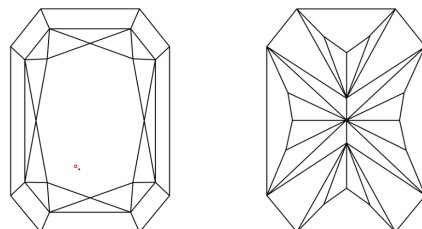
Comments: This Laboratory Grown Diamond was created by Chemical Vapor Deposition (CVD) growth process.
Type IIa

LG678524863
Report verification at igi.org

PROPORTIONS

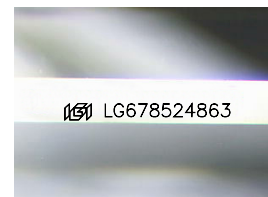


CLARITY CHARACTERISTICS



KEY TO SYMBOLS

Red symbols indicate internal characteristics.
Green symbols indicate external characteristics.



Sample Image Used

COLOR

D E F G H I J Faint Very Light Light

CLARITY

IF	VS ¹⁻²	VS ¹⁻²	SI ¹⁻²	I ¹⁻³
Internally Flawless	Very Very Slightly Included	Very Slightly Included	Slightly Included	Included

LABORATORY GROWN DIAMOND REPORT

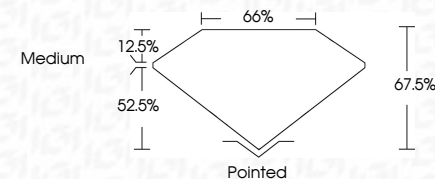


January 30, 2025	
IGI Report Number	LG678524863
Description	LABORATORY GROWN DIAMOND
Shape and Cutting Style	CUT CORNERED RECTANGULAR MODIFIED BRILLIANT

Measurements **12.20 X 8.61 X 5.81 MM**

GRADING RESULTS

Carat Weight	5.10 CARATS
Color Grade	E
Clarity Grade	VS 1



ADDITIONAL GRADING INFORMATION

Polish	EXCELLENT
Symmetry	EXCELLENT
Fluorescence	NONE
Inscription(s)	 LG678524863
<p>Comments: This Laboratory Grown Diamond was created by Chemical Vapor Deposition (CVD) growth process.</p> <p>Type IIa</p>	



© IGI 2020, International Gemological Institute

FD - 10 20

January 30, 2026	GI REPORT NO. LG7952/4863
GT CORNERED RECT. MODIFIED BRILLIANT	
21.20 X 8.61 X 5.81 MM	
Carat Weight	5.10 CARATS
Color Grade	E
Clarity Grade	VS 1
Depth	67.5%
Table	66%
Girdle	Medium
Culet	Poached
Polish	EXCELLENT
Symmetry	EXCELLENT
Fluorescence	NONE
Inscriptions(s)	IGI LG7952/4863

Comments:
This Laboratory Grown Diamond was created by Chemical Vapor Deposition (CVD) growth process.