



ELECTRONIC COPY

LG678522191
Report verification at igi.org



February 1, 2025

IGI Report Number **LG678522191**

Description **LABORATORY GROWN DIAMOND**

Shape and Cutting Style **CUT CORNERED
RECTANGULAR MODIFIED
BRILLIANT**

Measurements **7.53 X 5.53 X 3.84 MM**

GRADING RESULTS

Carat Weight **1.56 CARAT**

Color Grade **FANCY VIVID YELLOW**

Clarity Grade **VS 1**

LABORATORY GROWN DIAMOND REPORT

February 1, 2025

IGI Report Number **LG678522191**

Description **LABORATORY GROWN DIAMOND**

Shape and Cutting Style **CUT CORNERED RECTANGULAR
MODIFIED BRILLIANT**

Measurements **7.53 X 5.53 X 3.84 MM**

GRADING RESULTS

Carat Weight **1.56 CARAT**

Color Grade **FANCY VIVID YELLOW**

Clarity Grade **VS 1**

ADDITIONAL GRADING INFORMATION

Polish **EXCELLENT**

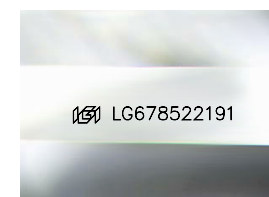
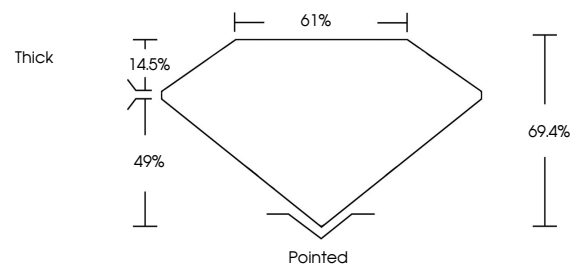
Symmetry **EXCELLENT**

Fluorescence **NONE**

Inscription(s) **IGI LG678522191**

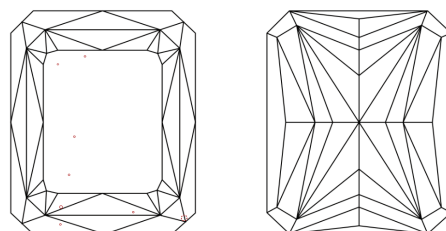
Comments: This Laboratory Grown Diamond was created by Chemical Vapor Deposition (CVD) growth process.

PROPORTIONS



Sample Image Used

CLARITY CHARACTERISTICS



KEY TO SYMBOLS

Red symbols indicate internal characteristics.
Green symbols indicate external characteristics.

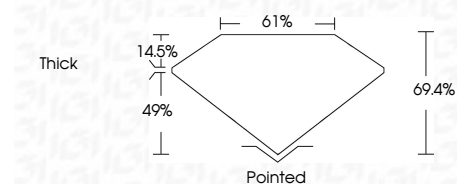
COLOR

D E F G H I J Faint Very Light Light

CLARITY

IF WS¹⁻² VS¹⁻² SI¹⁻² I¹⁻³

Internally Flawless Very Very Slightly Included Very Slightly Included Slightly Included Included



ADDITIONAL GRADING INFORMATION

Polish **EXCELLENT**

Symmetry **EXCELLENT**

Fluorescence **NONE**

Inscription(s) **IGI LG678522191**

Comments: This Laboratory Grown Diamond was created by Chemical Vapor Deposition (CVD) growth process.



IGI



February 1, 2025
IGI Report No LG678522191
CUT CORNERED RECT. MODIFIED BRILLIANT

7.53 X 5.53 X 3.84 MM
1.56 CARAT
FANCY VIVID YELLOW
VS 1
69.4%
61%
Thick

Culet Pointed
Polish EXCELLENT
Symmetry EXCELLENT
Fluorescence NONE
Inscription(s) IGI LG678522191

Comments: This Laboratory Grown Diamond was created by Chemical Vapor Deposition (CVD) growth process.