



ELECTRONIC COPY

LG678521024
Report verification at igi.org



February 11, 2025

IGI Report Number **LG678521024**

Description **LABORATORY GROWN DIAMOND**

Shape and Cutting Style **CUT CORNERED
RECTANGULAR MODIFIED
BRILLIANT**

Measurements **11.99 X 8.48 X 5.93 MM**

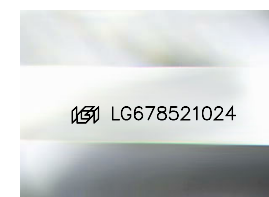
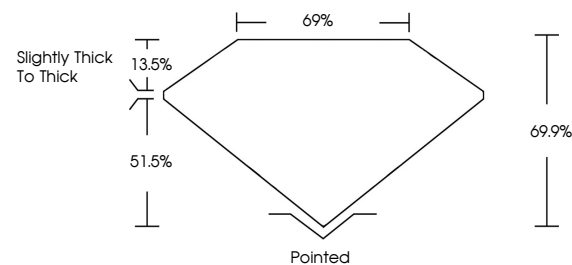
GRADING RESULTS

Carat Weight **5.30 CARATS**

Color Grade **E**

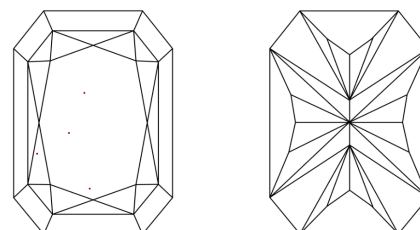
Clarity Grade **VVS 2**

PROPORTIONS



Sample Image Used

CLARITY CHARACTERISTICS



KEY TO SYMBOLS

Red symbols indicate internal characteristics.
Green symbols indicate external characteristics.

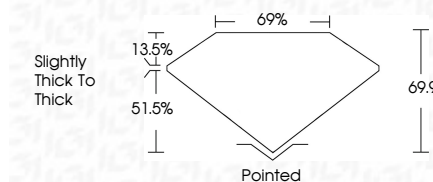
COLOR

D E F G H I J Faint Very Light Light

CLARITY

IF VS¹⁻² VS¹⁻² SI¹⁻² I¹⁻³

Internally Flawless Very Very Slightly Included Very Slightly Included Slightly Included Included



ADDITIONAL GRADING INFORMATION

Polish **EXCELLENT**

Symmetry **EXCELLENT**

Fluorescence **NONE**

Inscription(s) **IGI LG678521024**

Comments: This Laboratory Grown Diamond was created by Chemical Vapor Deposition (CVD) growth process. Type IIa



IGI



February 11, 2025
IGI Report No LG678521024
CUT CORNERED RECT. MODIFIED BRILLIANT

11.99 X 8.48 X 5.93 MM
5.30 CARATS
E
VVS 2
69%
69%
Slightly thick to thick

Pointed
EXCELLENT
EXCELLENT
NONE
IGI LG678521024

Comments: This Laboratory Grown Diamond was created by Chemical Vapor Deposition (CVD) growth process. Type IIa