

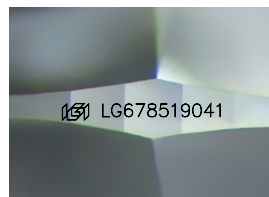
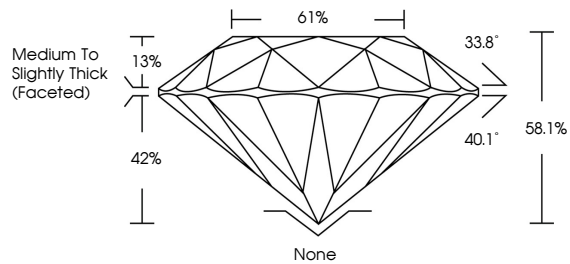


**INTERNATIONAL
GEMOLOGICAL
INSTITUTE**

ELECTRONIC COPY

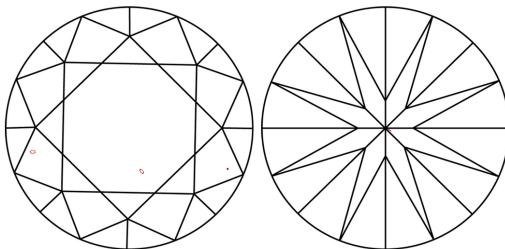
LG678519041
Report verification at igi.org

PROPORTIONS



Sample Image Used

CLARITY CHARACTERISTICS



KEY TO SYMBOLS

Red symbols indicate internal characteristics.
Green symbols indicate external characteristics.

COLOR

D E F G H I J Faint Very Light Light

CLARITY

IF WS¹⁻² VS¹⁻² SI¹⁻² |¹⁻³

Internally Flawless	Very Very Slightly Included	Very Slightly Included	Slightly Included	Included
------------------------	--------------------------------	---------------------------	----------------------	----------



January 24, 2025

IGI Report Number **LG678519041**

Description	LABORATORY GROWN DIAMOND
-------------	--------------------------

Shape and Cutting Style **ROUND BRILLIANT**

Measurements 11.13 - 11.22 X 6.50 MM

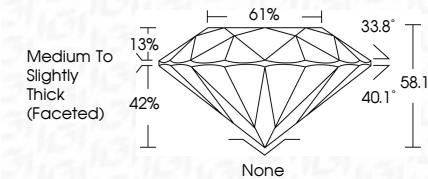
GRADING RESULTS

Carat Weight **5.00 CARATS**

Color Grade	F
-------------	---

Clarity Grade VS 2

Cut Grade **EXCELLENT**



ADDITIONAL GRADING INFORMATION

Polish **EXCELLENCE**Symmetry **EXCELLENCE**

Fluorescence NONI

Inscription(s)  LG67851904

Comments: This Laboratory Grown Diamond was created by Chemical Vapor Deposition (CVD) growth process.
Type IIa



IG



© IGI 2020, International Gemological Institute

FD - 10 20

www.igi.org

THIS DOCUMENT WAS PRODUCED WITH THE FOLLOWING SECURITY MEASURES: SPECIAL DOCUMENT PAPER, INK SCREENS, WATERMARK, BACKGROUND DESIGNS, HOLOGRAM AND OTHER SECURITY FEATURES NOT LISTED AND DO EXCEED DOCUMENT SECURITY INDUSTRY GUIDELINES

January 24, 2025
IGI Report No LG678519041
ROUND BRILLIANT

11.13 - 11.22 X 6.50 MM	5.00 CARATS	F
Color Grade	VS 2	
Clarity Grade	EXCELLENT	
Cut Grade	58.1%	
Depth	0.1%	
Table	Medium to Slightly Thick (faceted)	
Girdle		
Culet	None	
Polish	EXCELLENT	
Symmetry	EXCELLENT	
Fluorescence	NONE	
Proportions (%)	cert 15079519041	

Comments:
This Laboratory Grown Diamond was created by Chemical Vapor Deposition (CVD) growth process.