



ELECTRONIC COPY

LG678509046
Report verification at igi.org



January 31, 2025
IGI Report Number LG678509046
Description LABORATORY GROWN DIAMOND
Shape and Cutting Style CUSHION MODIFIED BRILLIANT
Measurements 7.93 X 6.61 X 4.31 MM
GRADING RESULTS
Carat Weight 2.05 CARATS
Color Grade FANCY INTENSE YELLOW
Clarity Grade VVS 2

LABORATORY GROWN DIAMOND REPORT

January 31, 2025
IGI Report Number LG678509046
Description LABORATORY GROWN DIAMOND
Shape and Cutting Style CUSHION MODIFIED BRILLIANT
Measurements 7.93 X 6.61 X 4.31 MM

GRADING RESULTS

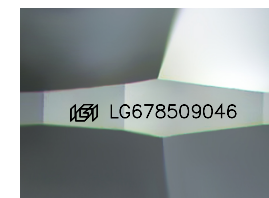
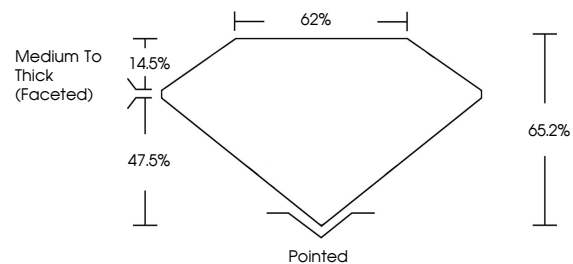
Carat Weight 2.05 CARATS
Color Grade FANCY INTENSE YELLOW
Clarity Grade VVS 2

ADDITIONAL GRADING INFORMATION

Polish EXCELLENT
Symmetry EXCELLENT
Fluorescence NONE
Inscription(s) IGI LG678509046

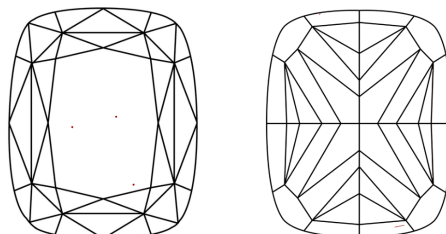
Comments: This Laboratory Grown Diamond was created by Chemical Vapor Deposition (CVD) growth process.

PROPORTIONS



Sample Image Used

CLARITY CHARACTERISTICS



KEY TO SYMBOLS

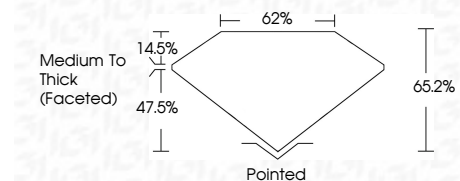
Red symbols indicate internal characteristics.
Green symbols indicate external characteristics.

COLOR

D E F G H I J Faint Very Light Light

CLARITY

IF WS 1-2 VS 1-2 SI 1-2 I 1-3
Internally Flawless Very Very Slightly Included Very Slightly Included Slightly Included Included



ADDITIONAL GRADING INFORMATION

Polish EXCELLENT
Symmetry EXCELLENT
Fluorescence NONE
Inscription(s) IGI LG678509046
Comments: This Laboratory Grown Diamond was created by Chemical Vapor Deposition (CVD) growth process.



January 31, 2025
IGI Report No LG678509046
CUSHION MODIFIED BRILLIANT
7.93 X 6.61 X 4.31 MM
2.05 CARATS
FANCY INTENSE YELLOW
VVS 2
65.2%
62%
Medium To Thick (Faceted)
Pointed
EXCELLENT
EXCELLENT
NONE
IGI LG678509046
Comments: This Laboratory Grown Diamond was created by Chemical Vapor Deposition (CVD) growth process.

Certified SUSTAINABILITY RATED DIAMOND
SCS GLOBAL SERVICES
All certified diamonds come with an individual certificate, ONLY available at an accredited retailer.
FOR THE SUSTAINABILITY RATED CERTIFICATE, SCAN HERE ->

