



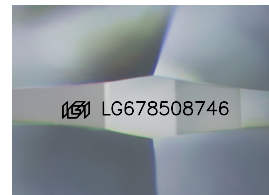
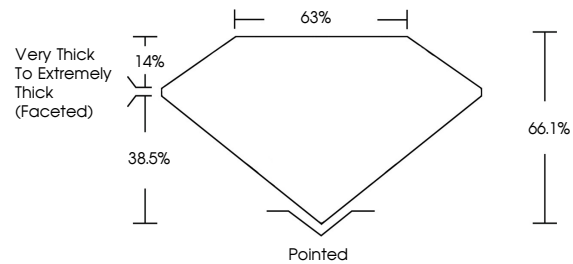
**INTERNATIONAL
GEMOLOGICAL
INSTITUTE**

ELECTRONIC COPY

LABORATORY GROWN DIAMOND REPORT

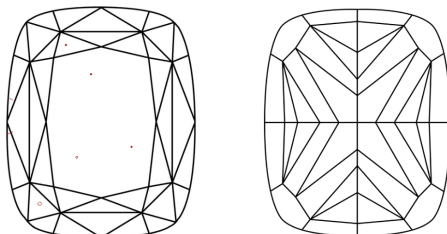
LG678508746
Report verification at igi.org

PROPORTIONS



Sample Image Used

CLARITY CHARACTERISTICS



KEY TO SYMBOLS

Red symbols indicate internal characteristics.
Green symbols indicate external characteristics.

COLOR

D E F G H I J Faint Very Light Light

CLARITY

IF WS¹⁻² VS¹⁻² SI¹⁻² I¹⁻³

Internally Flawless	Very Very Slightly Included	Very Slightly Included	Slightly Included	Included
------------------------	--------------------------------	---------------------------	----------------------	----------



© IGI 2020, International Gemological Institute

FD - 10 20

LABORATORY GROWN DIAMOND REPORT



January 31, 2025

IGI Report Number **LG678508746**

Description	LABORATORY GROWN DIAMOND
-------------	--------------------------

Shape and Cutting Style **CUSHION MODIFIED
BRILLIANT**

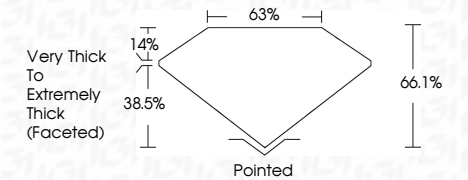
Measurements **6.16 X 5.14 X 3.40 MM**

GRADING RESULTS

Carat Weight 1.02 CARAT

Color Grade **FANCY YELLOW**

Clarity Grade VS 1



ADDITIONAL GRADING INFORMATION

Polish **EXCELLENT**

Symmetry **EXCELLENT**

Fluorescence **NONE**Inscription(s)  LG678508746

Comments: This Laboratory Grown Diamond was created by Chemical Vapor Deposition (CVD) growth process.



IGI

THIS DOCUMENT WAS PRODUCED WITH THE FOLLOWING SECURITY MEASURES: SPECIAL DOCUMENT PAPER, INK SCREENS, WATERMARK BACKGROUND DESIGNS, HOLOGRAM AND OTHER SECURITY FEATURES NOT LISTED AND DO EXCEED DOCUMENT SECURITY INDUSTRY GUIDELINES.

January 31, 2025	1.02 CARAT
GIG Report No G5978005746	FANCY YELLOW
CUSHION MODIFIED BRILLIANT	VSI VS 1 6A 1% 65%
6.16 X 6.14 X 3.40 MM	Very Thick To Extremely Thick (Faceted)
Color Grade	Polished EXCELLENT
Clarity Grade	Symmetry EXCELLENT
Depth	Fluorescence NONE
Table	Inscription(s) I991 G5978005746
Girdle	
Culet	
Polish	
Symmetry	
Fluorescence	
Inscription(s)	
Comments:	
	The Laboratory Grown Diamond was created by Chemical Vapor Deposition (CVD) growth process.

Comments:
This Laboratory Grown Diamond was created by Chemical Vapor Deposition (CVD) growth process.