



ELECTRONIC COPY

LG678506936
Report verification at igi.org



January 31, 2025
IGI Report Number LG678506936
Description LABORATORY GROWN DIAMOND
Shape and Cutting Style CUSHION MODIFIED BRILLIANT
Measurements 6.39 X 5.26 X 3.48 MM
GRADING RESULTS
Carat Weight 1.03 CARAT
Color Grade FANCY INTENSE YELLOW
Clarity Grade VVS 2

LABORATORY GROWN DIAMOND REPORT

January 31, 2025
IGI Report Number LG678506936
Description LABORATORY GROWN DIAMOND
Shape and Cutting Style CUSHION MODIFIED BRILLIANT
Measurements 6.39 X 5.26 X 3.48 MM

GRADING RESULTS

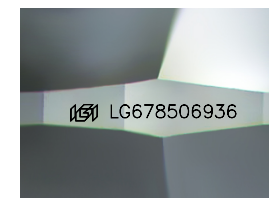
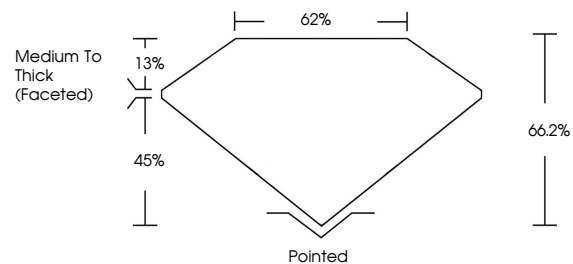
Carat Weight 1.03 CARAT
Color Grade FANCY INTENSE YELLOW
Clarity Grade VVS 2

ADDITIONAL GRADING INFORMATION

Polish EXCELLENT
Symmetry EXCELLENT
Fluorescence NONE
Inscription(s) IGI LG678506936

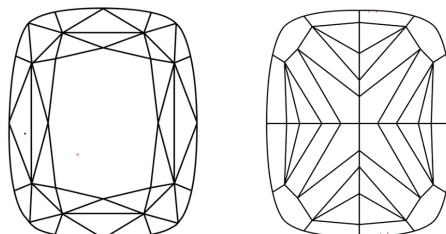
Comments: This Laboratory Grown Diamond was created by Chemical Vapor Deposition (CVD) growth process.

PROPORTIONS



Sample Image Used

CLARITY CHARACTERISTICS



KEY TO SYMBOLS

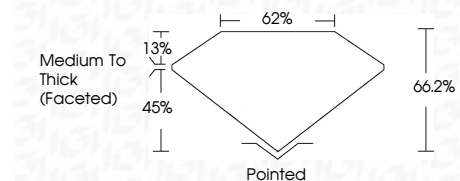
Red symbols indicate internal characteristics.
Green symbols indicate external characteristics.

COLOR

D E F G H I J Faint Very Light Light

CLARITY

IF VVS 1-2 VS 1-2 SI 1-2 I 1-3
Internally Flawless Very Very Slightly Included Very Slightly Included Slightly Included Included



ADDITIONAL GRADING INFORMATION

Polish EXCELLENT
Symmetry EXCELLENT
Fluorescence NONE
Inscription(s) IGI LG678506936
Comments: This Laboratory Grown Diamond was created by Chemical Vapor Deposition (CVD) growth process.



January 31, 2025
IGI Report No LG678506936
CUSHION MODIFIED BRILLIANT
6.39 X 5.26 X 3.48 MM
1.03 CARAT
FANCY INTENSE YELLOW
VVS 2
66.2%
62%
Medium To Thick (Faceted)
Pointed
EXCELLENT
EXCELLENT
NONE
IGI LG678506936
Comments: This Laboratory Grown Diamond was created by Chemical Vapor Deposition (CVD) growth process.