

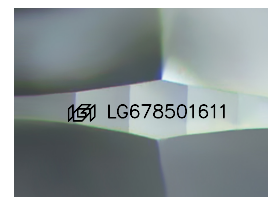
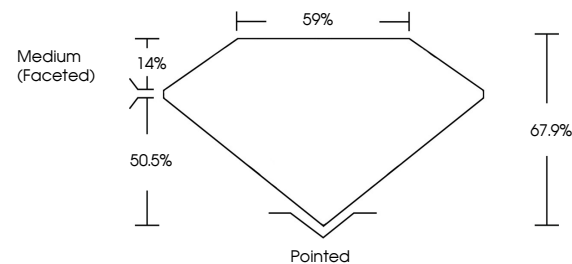


ELECTRONIC COPY

LABORATORY GROWN DIAMOND REPORT

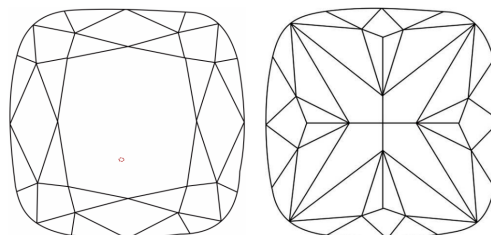
LG678501611
Report verification at igi.org

PROPORTIONS



Sample Image Used

CLARITY CHARACTERISTICS



KEY TO SYMBOLS

Red symbols indicate internal characteristics.
Green symbols indicate external characteristics.

COLOR

D E F G H I J Faint Very Light Light

CLARITY

IF	VS ¹⁻²	VS ¹⁻²	SI ¹⁻²	I ¹⁻³
Internally Flawless	Very Very Slightly Included	Very Slightly Included	Slightly Included	Included

LABORATORY GROWN DIAMOND REPORT



January 28, 2025

IGI Report Number **LG678501611**

Description	LABORATORY GROWN DIAMOND
-------------	--------------------------

Shape and Cutting Style **SQUARE CUSHION BRILLIANT**

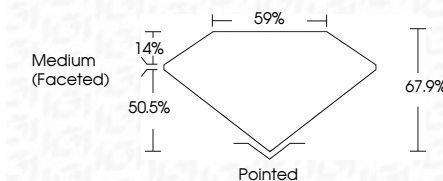
Measurements 6.03 X 5.89 X 4.00 MM

GRADING RESULTS

Carat Weight 1.07 CARAT

Color Grade E

Clarity Grade VS 1



ADDITIONAL GRADING INFORMATION

Polish **EXCELLENT**Symmetry **EXCELLENT**Fluorescence **NONE**Inscription(s) LG678501611

Comments: This Laboratory Grown Diamond was created by Chemical Vapor Deposition (CVD) growth process.
Type IIa



© IGI 2020, International Gemological Institute

FD - 10 20

www.igi.org

THIS DOCUMENT WAS PRODUCED WITH THE FOLLOWING SECURITY MEASURES: SPECIAL DOCUMENT PAPER, INK SCREENS, WATERMARK, BACKGROUND DESIGNS, HOLOGRAM AND OTHER SECURITY FEATURES NOT LISTED AND DO EXCEED DOCUMENT SECURITY INDUSTRY GUIDELINES

January 28, 2025	GL Report No. LG78501611	VS 1	Ported
SQUARE CUSHION BRILLIANT	Color Grade	6/7%	EXCELLENT
1.01 CT 5.03 X 5.09 X 4.00 MM	Clarity Grade	95%	EXCELLENT
	Table	Medium (Faceted)	NONE
	Depth		1691 LG78501611
	Girdle		
	Culet		
	Polish		
	Symmetry		
	Fluorescence		
	Inscriptions(s)		

Comments:
 The Laboratory Grown Diamond was
 synthesized using the Chemical Vapor Deposition
 (CVD) growth process.
 Type IIG