



ELECTRONIC COPY

LG677580843
Report verification at igi.org



February 1, 2025
IGI Report Number **LG677580843**
Description **LABORATORY GROWN DIAMOND**
Shape and Cutting Style **CUT CORNERED
RECTANGULAR MODIFIED
BRILLIANT**
Measurements **9.80 X 7.34 X 5.10 MM**
GRADING RESULTS
Carat Weight **3.60 CARATS**
Color Grade **FANCY VIVID YELLOW**
Clarity Grade **SI 1**

LABORATORY GROWN DIAMOND REPORT

February 1, 2025
IGI Report Number **LG677580843**
Description **LABORATORY GROWN DIAMOND**
Shape and Cutting Style **CUT CORNERED RECTANGULAR
MODIFIED BRILLIANT**
Measurements **9.80 X 7.34 X 5.10 MM**

GRADING RESULTS

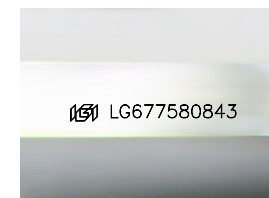
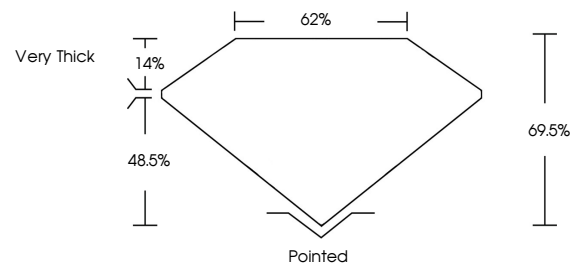
Carat Weight **3.60 CARATS**
Color Grade **FANCY VIVID YELLOW**
Clarity Grade **SI 1**

ADDITIONAL GRADING INFORMATION

Polish **EXCELLENT**
Symmetry **EXCELLENT**
Fluorescence **NONE**
Inscription(s) **IGI LG677580843**

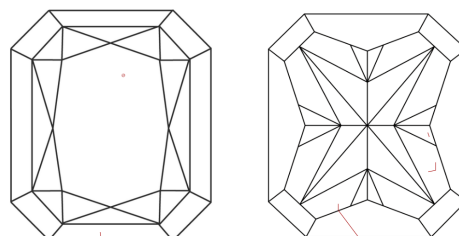
Comments: This Laboratory Grown Diamond was created by Chemical Vapor Deposition (CVD) growth process.

PROPORTIONS



Sample Image Used

CLARITY CHARACTERISTICS



KEY TO SYMBOLS

Red symbols indicate internal characteristics.
Green symbols indicate external characteristics.

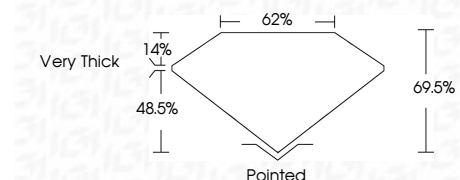
COLOR

D E F G H I J Faint Very Light Light

CLARITY

IF VS¹⁻² VS¹⁻² SI¹⁻² I¹⁻³

Internally Flawless Very Very Slightly Included Very Slightly Included Slightly Included Included



ADDITIONAL GRADING INFORMATION

Polish **EXCELLENT**
Symmetry **EXCELLENT**
Fluorescence **NONE**
Inscription(s) **IGI LG677580843**
Comments: This Laboratory Grown Diamond was created by Chemical Vapor Deposition (CVD) growth process.



IGI



February 1, 2025
IGI Report No LG677580843
CUT CORNERED RECT. MODIFIED BRILLIANT
9.80 X 7.34 X 5.10 MM
3.60 CARATS
Carat Weight
Color Grade FANCY VIVID YELLOW
Clarity Grade SI 1
Depth 48.5%
Table 62%
Girdle Very Thick
Culet Pointed
Polish EXCELLENT
Symmetry EXCELLENT
Fluorescence NONE
Inscription(s) IGI LG677580843

Comments: This Laboratory Grown Diamond was created by Chemical Vapor Deposition (CVD) growth process.