



ELECTRONIC COPY

LG677570029
Report verification at igi.org

LABORATORY GROWN DIAMOND REPORT

January 22, 2025
IGI Report Number **LG677570029**
Description **LABORATORY GROWN DIAMOND**
Shape and Cutting Style **SHIELD STEP CUT**
Measurements **8.76 X 5.98 X 4.66 MM**

GRADING RESULTS

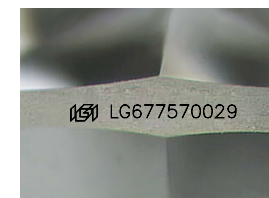
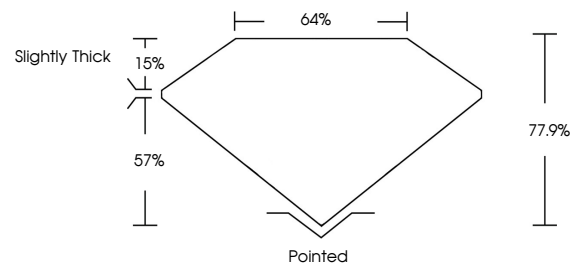
Carat Weight **1.57 CARAT**
Color Grade **E**
Clarity Grade **VS 2**

ADDITIONAL GRADING INFORMATION

Polish **EXCELLENT**
Symmetry **EXCELLENT**
Fluorescence **NONE**
Inscription(s) **IGI LG677570029**

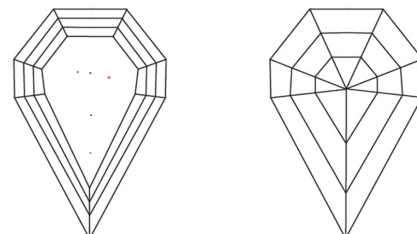
Comments: This Laboratory Grown Diamond was created by Chemical Vapor Deposition (CVD) growth process.
Type IIa

PROPORTIONS



Sample Image Used

CLARITY CHARACTERISTICS



KEY TO SYMBOLS

Red symbols indicate internal characteristics.
Green symbols indicate external characteristics.

COLOR

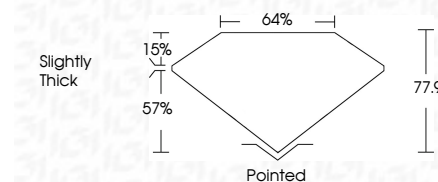
D E F G H I J Faint Very Light Light

CLARITY

IF	WS ¹⁻²	VS ¹⁻²	SI ¹⁻²	I ¹⁻³
Internally Flawless	Very Very Slightly Included	Very Slightly Included	Slightly Included	Included



January 22, 2025
IGI Report Number **LG677570029**
Description **LABORATORY GROWN DIAMOND**
Shape and Cutting Style **SHIELD STEP CUT**
Measurements **8.76 X 5.98 X 4.66 MM**
GRADING RESULTS
Carat Weight **1.57 CARAT**
Color Grade **E**
Clarity Grade **VS 2**



ADDITIONAL GRADING INFORMATION

Polish **EXCELLENT**
Symmetry **EXCELLENT**
Fluorescence **NONE**
Inscription(s) **IGI LG677570029**
Comments: This Laboratory Grown Diamond was created by Chemical Vapor Deposition (CVD) growth process.
Type IIa



IGI



January 22, 2025
IGI Report No LG677570029
SHIELD STEP CUT
8.76 X 5.98 X 4.66 MM
1.57 CARAT
E
VS 2
77.9%
64%
Slightly Thick
Pointed
EXCELLENT
EXCELLENT
NONE
IGI LG677570029
Comments: This Laboratory Grown Diamond was created by Chemical Vapor Deposition (CVD) growth process.
Type IIa