



ELECTRONIC COPY

LG677569876
Report verification at igi.org



February 10, 2025

IGI Report Number **LG677569876**

Description **LABORATORY GROWN DIAMOND**

Shape and Cutting Style **PEAR STEP CUT**

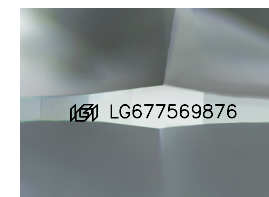
Measurements **10.24 X 6.33 X 3.62 MM**

GRADING RESULTS

Carat Weight **1.50 CARAT**

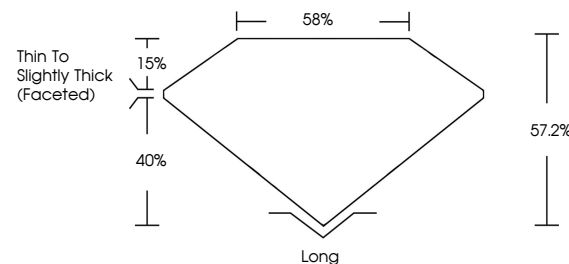
Color Grade **F**

Clarity Grade **VS 1**

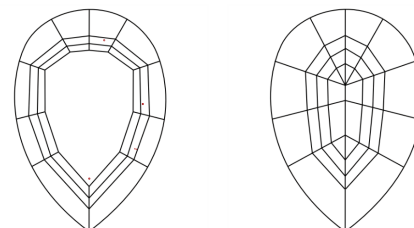


Sample Image Used

PROPORTIONS



CLARITY CHARACTERISTICS



KEY TO SYMBOLS

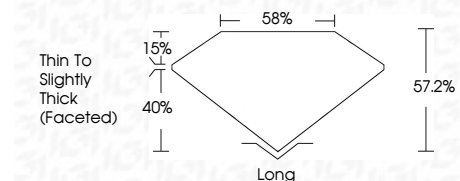
Red symbols indicate internal characteristics.
Green symbols indicate external characteristics.

COLOR

D E F G H I J Faint Very Light Light

CLARITY

IF	VS ¹⁻²	VS ¹⁻²	SI ¹⁻²	I ¹⁻³
Internally Flawless	Very Very Slightly Included	Very Slightly Included	Slightly Included	Included



ADDITIONAL GRADING INFORMATION

Polish **EXCELLENT**

Symmetry **EXCELLENT**

Fluorescence **NONE**

Inscription(s) **IGI LG677569876**

Comments: This Laboratory Grown Diamond was created by Chemical Vapor Deposition (CVD) growth process. Type IIa



IGI



February 10, 2025
IGI Report No LG677569876
PEAR STEP CUT
10.24 X 6.33 X 3.62 MM
1.50 CARAT
Color Grade **F**
Clarity Grade **VS 1**
Depth **57.2%**
Table **58%**
Girdle **Thin To Slightly Thick (Faceted)**
Culet **Long**
Polish **EXCELLENT**
Symmetry **EXCELLENT**
Fluorescence **NONE**
Inscription(s) **IGI LG677569876**
Comments: This Laboratory Grown Diamond was created by Chemical Vapor Deposition (CVD) growth process. Type IIa