



**ELECTRONIC COPY**

## LABORATORY GROWN DIAMOND REPORT

January 30, 2025	
IGI Report Number	LG677560899
Description	LABORATORY GROWN DIAMOND
Shape and Cutting Style	SQUARE EMERALD CUT
Measurements	5.71 X 5.67 X 3.38 MM

## GRADING RESULTS

Carat Weight	1.02 CARAT
Color Grade	FANCY INTENSE YELLOW
Clarity Grade	VVS 2

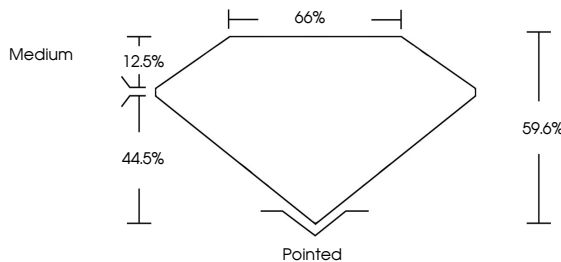
### ADDITIONAL GRADING INFORMATION

Polish	EXCELLENT
Symmetry	EXCELLENT
Fluorescence	NONE
Inscription(s)	 LG677560899

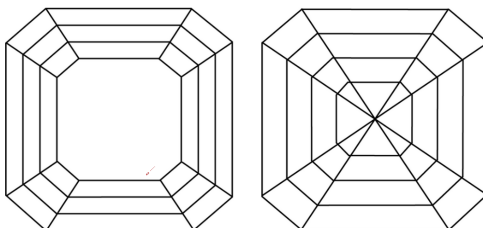
Comments: As Grown - No indication of post-growth treatment.  
This Laboratory Grown Diamond was created by High Pressure High Temperature (HPHT) growth process.

LG677560899  
Report verification at [igi.org](https://igi.org)

## PROPORTIONS

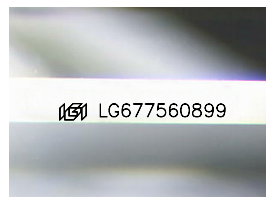


## CLARITY CHARACTERISTICS



## KEY TO SYMBOLS

Red symbols indicate internal characteristics.  
Green symbols indicate external characteristics.



Sample Image Used

## COLOR

D E F G H I J Faint Very Light Light

## CLARITY


IF	VS <sup>1-2</sup>	VS <sup>1-2</sup>	SI <sup>1-2</sup>	I <sup>1-3</sup>
Internally Flawless	Very Very Slightly Included	Very Slightly Included	Slightly Included	Included

## LABORATORY GROWN DIAMOND REPORT



January 30, 2025	
IGI Report Number	LG677560899
Description	LABORATORY GROWN DIAMOND
Shape and Cutting Style	SQUARE EMERALD CUT
Measurements	5.71 X 5.67 X 3.38 MM
GRADING RESULTS	
Carat Weight	1.02 CARAT
Color Grade	FANCY INTENSE YELLOW
Clarity Grade	VVS 2

### ADDITIONAL GRADING INFORMATION

Polish	EXCELLENT
Symmetry	EXCELLENT
Fluorescence	NONE
Inscription(s)	 LG677560899
Comments: As Grown - No indication of post-growth treatment.	
This Laboratory Grown Diamond was created by High Pressure High Temperature (HPHT) growth process.	



IG



© IGI 2020, International Gemological Institute

FD - 10 20



THIS DOCUMENT WAS PRODUCED WITH THE FOLLOWING SECURITY MEASURES: SPECIAL DOCUMENT PAPER, INK SCREENS, WATERMARK BACKGROUND DESIGNS, HOLOGRAM AND OTHER SECURITY FEATURES NOT LISTED AND DO EXCEED DOCUMENT SECURITY INDUSTRY GUIDELINES

**www.igi.org**

