



**ELECTRONIC COPY**

LG67755524  
Report verification at igi.org



January 31, 2025  
IGI Report Number **LG67755524**  
Description **LABORATORY GROWN DIAMOND**  
Shape and Cutting Style **SQUARE CUSHION MODIFIED BRILLIANT**

Measurements **6.45 X 6.34 X 3.97 MM**

**GRADING RESULTS**

Carat Weight **1.51 CARAT**  
Color Grade **FANCY VIVID YELLOW**  
Clarity Grade **SI 1**

January 31, 2025  
IGI Report Number **LG67755524**  
Description **LABORATORY GROWN DIAMOND**  
Shape and Cutting Style **SQUARE CUSHION MODIFIED BRILLIANT**  
Measurements **6.45 X 6.34 X 3.97 MM**

**GRADING RESULTS**

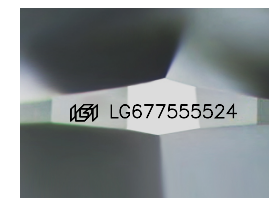
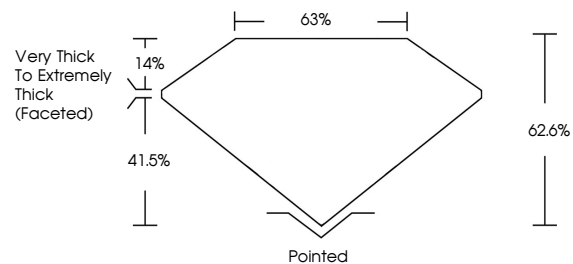
Carat Weight **1.51 CARAT**  
Color Grade **FANCY VIVID YELLOW**  
Clarity Grade **SI 1**

**ADDITIONAL GRADING INFORMATION**

Polish **EXCELLENT**  
Symmetry **EXCELLENT**  
Fluorescence **NONE**  
Inscription(s) **IGI LG67755524**

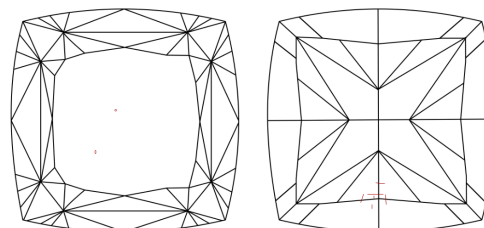
Comments: This Laboratory Grown Diamond was created by Chemical Vapor Deposition (CVD) growth process.

**PROPORTIONS**



Sample Image Used

**CLARITY CHARACTERISTICS**



**KEY TO SYMBOLS**

Red symbols indicate internal characteristics.  
Green symbols indicate external characteristics.

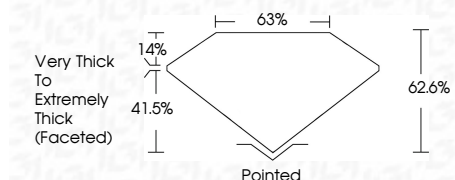
**COLOR**

D E F G H I J Faint Very Light Light

**CLARITY**

IF VS<sup>1-2</sup> VS<sup>1-2</sup> SI<sup>1-2</sup> I<sup>1-3</sup>

Internally Flawless Very Very Slightly Included Very Slightly Included Slightly Included Included



**ADDITIONAL GRADING INFORMATION**

Polish **EXCELLENT**  
Symmetry **EXCELLENT**  
Fluorescence **NONE**  
Inscription(s) **IGI LG67755524**  
Comments: This Laboratory Grown Diamond was created by Chemical Vapor Deposition (CVD) growth process.



**IGI**



January 31, 2025  
IGI Report No LG67755524  
**SQUARE CUSHION MODIFIED BRILLIANT**  
6.45 X 6.34 X 3.97 MM  
1.51 CARAT  
FANCY VIVID YELLOW  
SI 1  
62.6%  
63%  
Very Thick to Extremely Thick (Faceted)  
Pointed  
EXCELLENT  
EXCELLENT  
NONE  
IGI LG67755524

Comments: This Laboratory Grown Diamond was created by Chemical Vapor Deposition (CVD) growth process.