



ELECTRONIC COPY

LG677542475
Report verification at igi.org



January 17, 2025

IGI Report Number **LG677542475**

Description **LABORATORY GROWN DIAMOND**

Shape and Cutting Style **PEAR BRILLIANT**

Measurements **11.32 X 7.28 X 4.60 MM**

GRADING RESULTS

Carat Weight **2.26 CARATS**

Color Grade **D**

Clarity Grade **VVS 2**

January 17, 2025

IGI Report Number **LG677542475**

Description **LABORATORY GROWN DIAMOND**

Shape and Cutting Style **PEAR BRILLIANT**

Measurements **11.32 X 7.28 X 4.60 MM**

GRADING RESULTS

Carat Weight **2.26 CARATS**

Color Grade **D**

Clarity Grade **VVS 2**

ADDITIONAL GRADING INFORMATION

Polish **EXCELLENT**

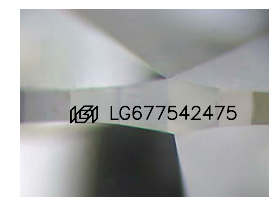
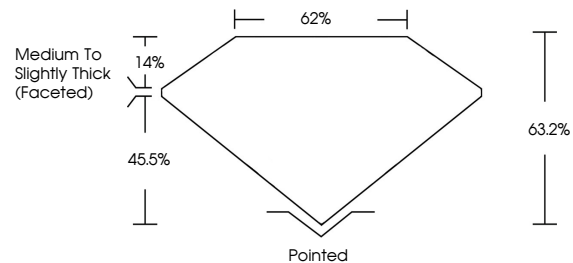
Symmetry **EXCELLENT**

Fluorescence **NONE**

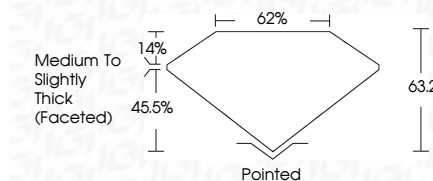
Inscription(s) **IGI LG677542475**

Comments: This Laboratory Grown Diamond was created by Chemical Vapor Deposition (CVD) growth process.
Type IIa

PROPORTIONS



Sample Image Used



COLOR

D E F G H I J Faint Very Light Light

CLARITY

IF	VS ¹⁻²	VS ¹⁻²	SI ¹⁻²	I ¹⁻³
Internally Flawless	Very Very Slightly Included	Very Slightly Included	Slightly Included	Included

ADDITIONAL GRADING INFORMATION

Polish **EXCELLENT**

Symmetry **EXCELLENT**

Fluorescence **NONE**

Inscription(s) **IGI LG677542475**

Comments: This Laboratory Grown Diamond was created by Chemical Vapor Deposition (CVD) growth process.
Type IIa



IGI



January 17, 2025
IGI Report No LG677542475
PEAR BRILLIANT

2.26 CARATS
D

11.32 X 7.28 X 4.60 MM

Carat Weight
Color Grade
Clarity Grade
Table
Girdle
Medium to Slightly Thick (Faceted)

VVS 2
D
VVS 2
62%
62%

Pointed
EXCELLENT
EXCELLENT
NONE
IGI LG677542475

Culet
Polish
Symmetry
Fluorescence
Inscription(s)

Comments: This Laboratory Grown Diamond was created by Chemical Vapor Deposition (CVD) growth process.
Type IIa