

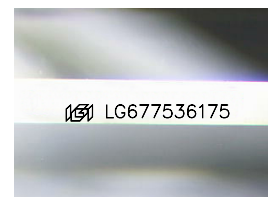
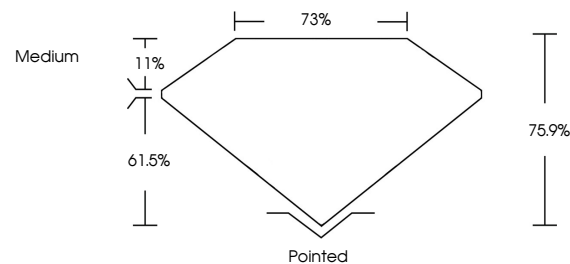


ELECTRONIC COPY

LABORATORY GROWN DIAMOND REPORT

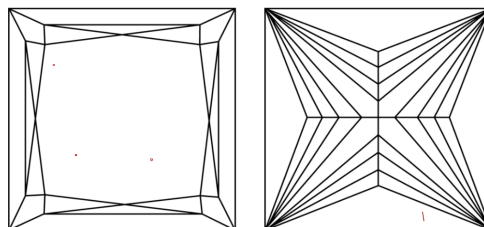
LG677536175
Report verification at igi.org

PROPORTIONS



Sample Image Used

CLARITY CHARACTERISTICS



KEY TO SYMBOLS

Red symbols indicate internal characteristics.
Green symbols indicate external characteristics.

COLOR

D E F G H I J Faint Very Light Light

CLARITY

IF	VS ¹⁻²	VS ¹⁻²	SI ¹⁻²	I ¹⁻³
Internally Flawless	Very Very Slightly Included	Very Slightly Included	Slightly Included	Included

LABORATORY GROWN DIAMOND REPORT



January 28, 2025

IGI Report Number **LG677536175**Description **LABORATORY GROWN DIAMOND**Shape and Cutting Style **PRINCESS CUT**

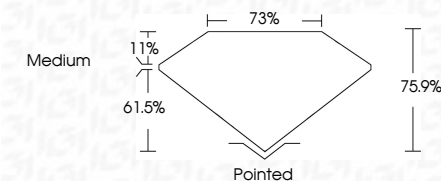
Measurements **5.69 X 5.60 X 4.25 MM**

GRADING RESULTS

Carat Weight 1.19 CARAT

Color Grade **FANCY PINK**

Clarity Grade VS 1



ADDITIONAL GRADING INFORMATION

Polish VERY GOOD

Symmetry **VERY GOOD**

Fluorescence SLIGHT

Inscription(s) LG677536175

Comments: This Laboratory Grown Diamond was created by Chemical Vapor Deposition (CVD) growth process.

Indications of post-growth treatment.



www.igi.org

© IGI 2020, International Gemological Institute

FD - 10 20



THIS DOCUMENT WAS PRODUCED WITH THE FOLLOWING SECURITY MEASURES: SPECIAL DOCUMENT PAPER, INK SCREENS, WATERMARK, BACKGROUND DESIGNS, HOLOGRAM AND OTHER SECURITY FEATURES NOT LISTED AND DO EXCEED DOCUMENT SECURITY INDUSTRY GUIDELINES

January 28, 2025
GI Report No LG677536175
PRINCESS CUT

1.19 CARAT	1.19 CARAT
FANCY PINK	FANCY PINK
VS 1	VS 1
75.9%	75.9%
75%	75%
Medium	Medium
Pointed	Pointed
VERY GOOD	VERY GOOD
VERY GOOD	VERY GOOD
SLIGHT	SLIGHT
see I G 577531175	see I G 577531175

Comments:
This Laboratory Grown Diamond was created by Chemical Vapor Deposition (CVD) growth process.
indications of post-growth treatment