



ELECTRONIC COPY

LG677527644
Report verification at igi.org



January 28, 2025
IGI Report Number **LG677527644**
Description **LABORATORY GROWN DIAMOND**

Shape and Cutting Style **PEAR MODIFIED BRILLIANT**
Measurements **11.96 X 7.38 X 4.86 MM**

GRADING RESULTS
Carat Weight **3.07 CARATS**
Color Grade **FANCY VIVID YELLOW**
Clarity Grade **VVS 2**

January 28, 2025
IGI Report Number **LG677527644**
Description **LABORATORY GROWN DIAMOND**
Shape and Cutting Style **PEAR MODIFIED BRILLIANT**
Measurements **11.96 X 7.38 X 4.86 MM**

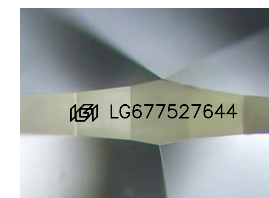
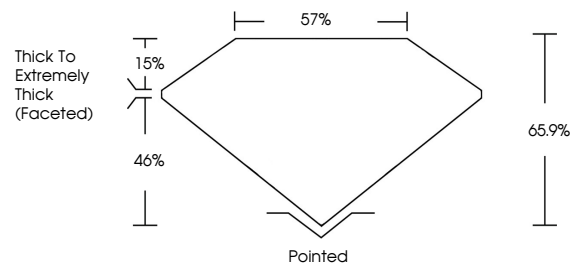
GRADING RESULTS
Carat Weight **3.07 CARATS**
Color Grade **FANCY VIVID YELLOW**
Clarity Grade **VVS 2**

ADDITIONAL GRADING INFORMATION
Polish **EXCELLENT**
Symmetry **EXCELLENT**
Fluorescence **NONE**
Inscription(s) **IGI LG677527644**

Comments: This Laboratory Grown Diamond was created by Chemical Vapor Deposition (CVD) growth process.

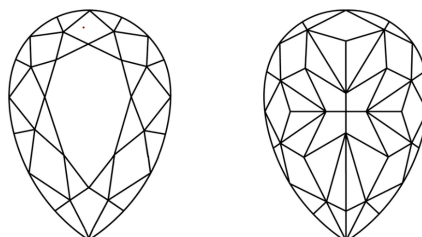
Secondary color: Brown

PROPORTIONS



Sample Image Used

CLARITY CHARACTERISTICS



KEY TO SYMBOLS

Red symbols indicate internal characteristics.
Green symbols indicate external characteristics.

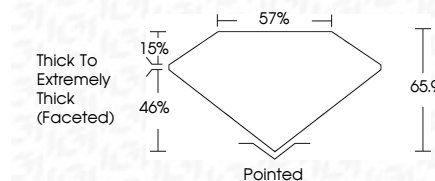
COLOR

D E F G H I J Faint Very Light Light

CLARITY

IF VS¹⁻² VS¹⁻² SI¹⁻² I¹⁻³

Internally Flawless Very Very Slightly Included Very Slightly Included Slightly Included Included



ADDITIONAL GRADING INFORMATION

Polish **EXCELLENT**
Symmetry **EXCELLENT**
Fluorescence **NONE**
Inscription(s) **IGI LG677527644**

Comments: This Laboratory Grown Diamond was created by Chemical Vapor Deposition (CVD) growth process.

Secondary color: Brown



IGI



January 28, 2025
IGI Report No LG677527644
PEAR MODIFIED BRILLIANT
3.07 CARATS
Carat Weight **FANCY VIVID YELLOW**
Color Grade **VVS 2**
11.96 X 7.38 X 4.86 MM
Depth **65.9%**
Table **57%**
Girdle **Thick To Extremely Thick (Faceted)**
Culet **Pointed**
Polish **EXCELLENT**
Symmetry **EXCELLENT**
Fluorescence **NONE**
Inscription(s) **IGI LG677527644**
Comments: This Laboratory Grown Diamond was created by Chemical Vapor Deposition (CVD) growth process.
Secondary color: Brown