

INTERNATIONAL  
GEMOLOGICAL  
INSTITUTE

ELECTRONIC COPY

LABORATORY GROWN DIAMOND REPORT

January 17, 2025

IGI Report Number

Description

Shape and Cutting Style

Measurements

LG677526974

LABORATORY GROWN DIAMOND

ROUND BRILLIANT

10.53 - 10.57 x 6.42 mm

GRADING RESULTS

Carat Weight

Color Grade

Clarity Grade

Cut Grade

4.35 CARATS

E

VVS 2

IDEAL

ADDITIONAL GRADING INFORMATION

Polish

Symmetry

Fluorescence

Inscription(s)

Comments: HEARTS & ARROWS

This Laboratory Grown Diamond was created by Chemical Vapor Deposition (CVD) growth process. Type IIa

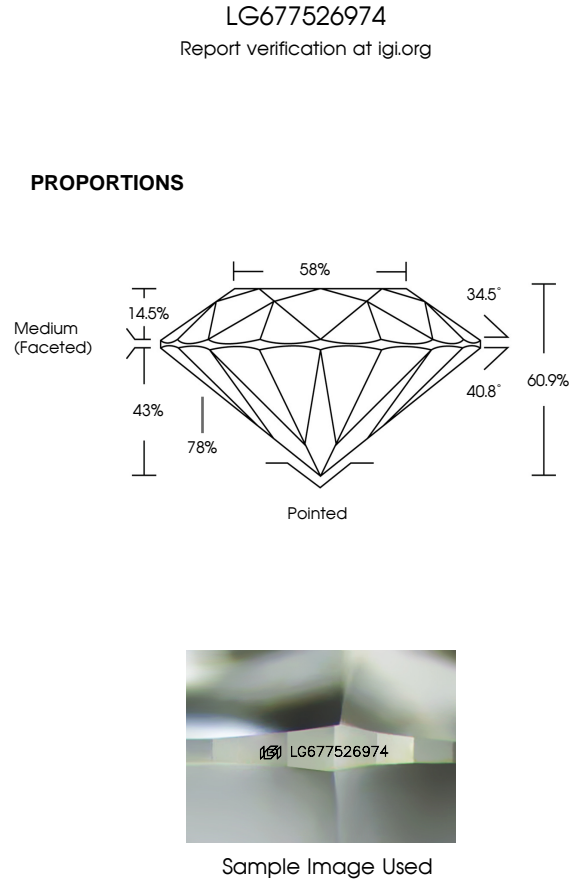
EXCELLENT

EXCELLENT

NONE

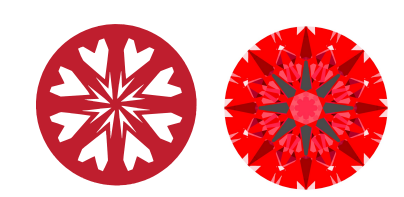
IGI LG677526974

IGI LG677526974



LIGHT PERFORMANCE REPORT

Light Performance Grade: Exceptional



Ideal-Scope representation

Low

Moderate

High

Superior

Exceptional

Light Performance

Brightness

Fire

Contrast

COLOR

D

E

F

G

H

I

J

Faint

Very Light

Light

CLARITY

IF

VVS 1 - 2

VS 1 - 2

SI 1 - 2

I 1 - 3

Internally Flawless

Very Very Slightly Included



Very Slightly Included


Slightly Included

Included

© IGI 2020, International Gemological Institute

FD - 10 20





January 17, 2025

IGI Report Number

Description

Shape and Cutting Style

Measurements

GRADING RESULTS

Carat Weight

Color Grade

Clarity Grade

Cut Grade

LG677526974

LABORATORY GROWN DIAMOND

ROUND BRILLIANT

10.53 - 10.57 X 6.42 MM

ADDITIONAL GRADING INFORMATION

Polish

Symmetry

Fluorescence

Inscription(s)

Comments: HEARTS & ARROWS

This Laboratory Grown Diamond was created by Chemical Vapor Deposition (CVD) growth process. Type IIa

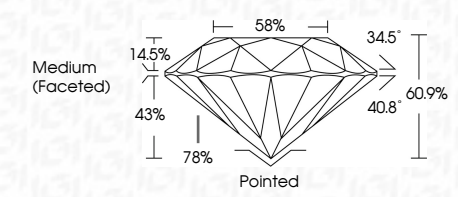
EXCELLENT

EXCELLENT

NONE


IGI LG677526974

IGI LG677526974



Medium (Faceted)

Pointed



IGI

January 17, 2025

IGI Report No LG677526974

ROUND BRILLIANT

10.53 - 10.57 X 6.42 MM

Carat Weight

Color Grade

Clarity Grade

Cut Grade

Depth

Table

Grade

Medium (Faceted)

Pointed

Polish

Symmetry

Fluorescence

Inscription(s)

IGI LG677526974

Comments: HEARTS & ARROWS

This Laboratory Grown Diamond was created by Chemical Vapor Deposition (CVD) growth process. Type IIa

4.35 CARATS

E

VVS 2

IDEAL

60.9%

58%

Medium (Faceted)

Pointed

EXCELLENT

EXCELLENT

NONE

IGI LG677526974

Comments: HEARTS & ARROWS

This Laboratory Grown Diamond was created by Chemical Vapor Deposition (CVD) growth process. Type IIa