



ELECTRONIC COPY

LG677524574
Report verification at igi.org



January 27, 2025

IGI Report Number **LG677524574**

Description **LABORATORY GROWN DIAMOND**

Shape and Cutting Style **CUT CORNERED
RECTANGULAR MODIFIED
BRILLIANT**

Measurements **8.53 X 8.07 X 5.25 MM**

GRADING RESULTS

Carat Weight **3.44 CARATS**

Color Grade **FANCY VIVID GREEN**

Clarity Grade **VVS 2**

LABORATORY GROWN DIAMOND REPORT

January 27, 2025

IGI Report Number **LG677524574**

Description **LABORATORY GROWN DIAMOND**

Shape and Cutting Style **CUT CORNERED RECTANGULAR
MODIFIED BRILLIANT**

Measurements **8.53 X 8.07 X 5.25 MM**

GRADING RESULTS

Carat Weight **3.44 CARATS**

Color Grade **FANCY VIVID GREEN**

Clarity Grade **VVS 2**

ADDITIONAL GRADING INFORMATION

Polish **EXCELLENT**

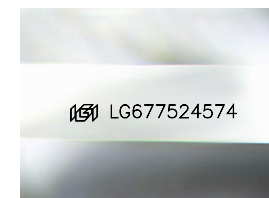
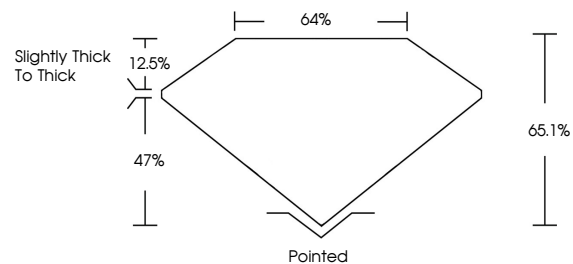
Symmetry **EXCELLENT**

Fluorescence **VERY SLIGHT**

Inscription(s) **IGI LG677524574**

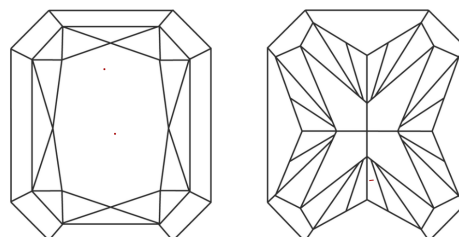
Comments: This Laboratory Grown Diamond was created by Chemical Vapor Deposition (CVD) growth process. Indications of post-growth treatment.

PROPORTIONS



Sample Image Used

CLARITY CHARACTERISTICS



KEY TO SYMBOLS

Red symbols indicate internal characteristics.
Green symbols indicate external characteristics.

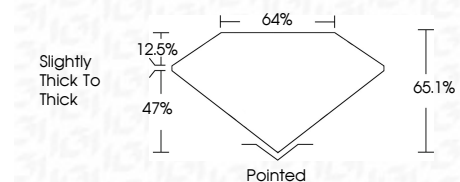
COLOR

D E F G H I J Faint Very Light Light

CLARITY

IF VS¹⁻² VS¹⁻² SI¹⁻² I¹⁻³

Internally Flawless Very Very Slightly Included Very Slightly Included Slightly Included Included



ADDITIONAL GRADING INFORMATION

Polish **EXCELLENT**

Symmetry **EXCELLENT**

Fluorescence **VERY SLIGHT**

Inscription(s) **IGI LG677524574**

Comments: This Laboratory Grown Diamond was created by Chemical Vapor Deposition (CVD) growth process. Indications of post-growth treatment.



IGI



January 27, 2025
IGI Report No LG677524574
CUT CORNERED RECT. MODIFIED BRILLIANT
8.53 X 8.07 X 5.25 MM
3.44 CARATS
FANCY VIVID GREEN
VVS 2
65.1%
47%
Slightly thick to thick
Pointed
EXCELLENT
EXCELLENT
VERY SLIGHT
IGI LG677524574

Comments: This Laboratory Grown Diamond was created by Chemical Vapor Deposition (CVD) growth process. Indications of post-growth treatment.