

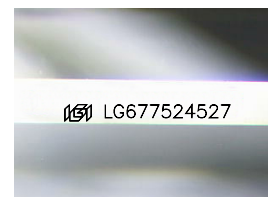
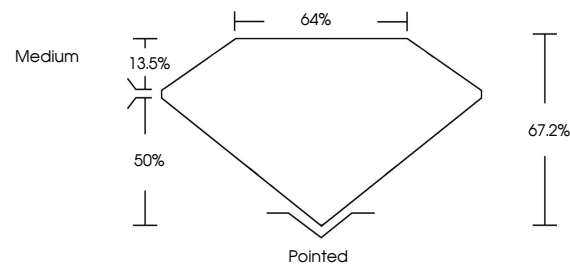


ELECTRONIC COPY

LABORATORY GROWN DIAMOND REPORT

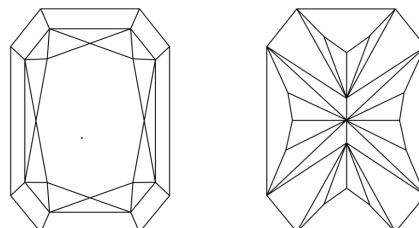
LG677524527
Report verification at lgi.org

PROPORTIONS



Sample Image Used

CLARITY CHARACTERISTICS



KEY TO SYMBOLS

Red symbols indicate internal characteristics.
Green symbols indicate external characteristics.

COLOR

D E F G H I J Faint Very Light Light

CLARITY

IF	VS ¹⁻²	VS ¹⁻²	SI ¹⁻²	I ¹⁻³
Internally Flawless	Very Very Slightly Included	Very Slightly Included	Slightly Included	Included

LABORATORY GROWN DIAMOND REPORT



January 22, 2025

IGI Report Number **LG677524527**

Description	LABORATORY GROWN DIAMOND
-------------	--------------------------

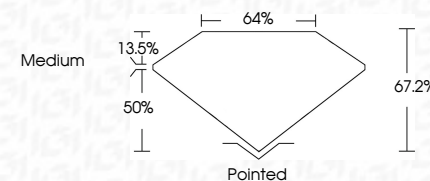
Shape and Cutting Style

Measurements **8.89 X 6.32 X 4.25 MM**

GRADING RESULTS

Carat Weight **2.08 CARATS**

Color Grade D

Clarity Grade VVS 2

ADDITIONAL GRADING INFORMATION

Polish **EXCELLENT**Symmetry **EXCELLENT**Fluorescence **NONE**Inscription(s) LG677524527

Comments: This Laboratory Grown Diamond was created by Chemical Vapor Deposition (CVD) growth process.
Type IIa



© IGI 2020, International Gemological Institute

FD - 10 20

www.igi.org

THIS DOCUMENT WAS PRODUCED WITH THE FOLLOWING SECURITY MEASURES: SPECIAL DOCUMENT PAPER, INK SCREENS, WATERMARK, BACKGROUND DESIGNS, HOLOGRAM AND OTHER SECURITY FEATURES NOT LISTED AND DO EXCEED DOCUMENT SECURITY INDUSTRY GUIDELINE

January 22, 2025	GI Report No. LG57594527	2.08 CARATS
CU CORNERED RECT. MODIFIED BRILLIANT		D
		VVS 2
		67.2%
		64%
		Medium
		Pointed
		EXCELLENT
		EXCELLENT
		NONE
		681 LG57594527

Comments:

The Laboratory Grown Diamond was
 analyzed using Laser Vapor Deposition
 (LVD) growth process.
 type IIG