



LABORATORY GROWN DIAMOND REPORT

January 21, 2025	
IGI Report Number	LG677523251
Description	LABORATORY GROWN DIAMOND
Shape and Cutting Style	ROUND BRILLIANT
Measurements	8.61 - 8.66 x 5.19 mm

GRADING RESULTS

Carat Weight	2.39 CARATSS
Color Grade	F
Clarity Grade	VVS 2
Cut Grade	IDEAL

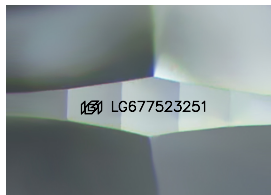
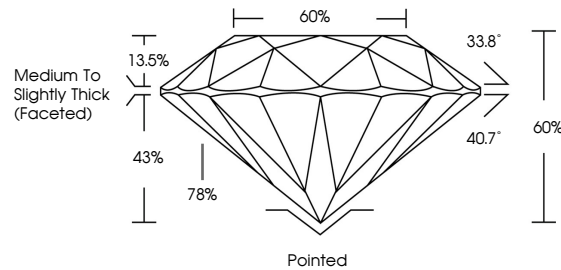
ADDITIONAL GRADING INFORMATION

Polish	EXCELLENT
Symmetry	EXCELLENT
Fluorescence	NONE
Inscription(s)	 LG677523251

Comments: This Laboratory Grown Diamond was created by Chemical Vapor Deposition (CVD) growth process.
Type IIa

LG677523251
Report verification at igi.org

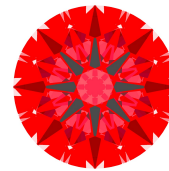
PROPORTIONS



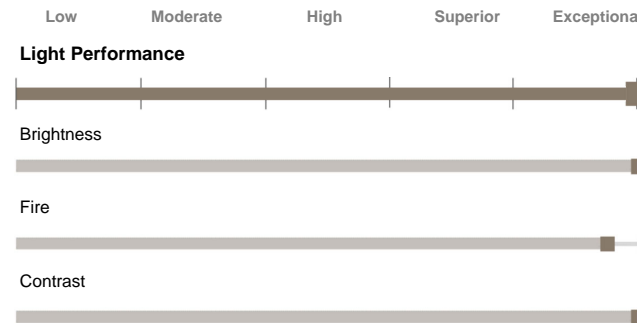
Sample Image Used

LIGHT PERFORMANCE REPORT

Light Performance Grade: Exceptional



Ideal-Scope representation



COLOR

D E F G H I J Faint Very Light Light

CLARITY

IF	VVS ¹⁻²	VS ¹⁻²	SI ¹⁻²	I ¹⁻³
Internally Flawless	Very Very Slightly Included	Very Slightly Included	Slightly Included	Included

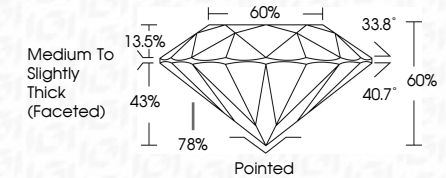
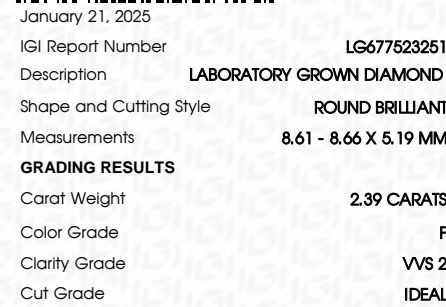


© IGI 2020, International Gemological Institute

FD - 10 20



THIS DOCUMENT WAS PRODUCED WITH THE FOLLOWING SECURITY MEASURES: SPECIAL DOCUMENT PAPER, INK SCREENS, WATERMARK BACKGROUND DESIGNS, HOLOGRAM AND OTHER SECURITY FEATURES NOT LISTED AND DO EXCEED DOCUMENT SECURITY INDUSTRY GUIDELINES.



ADDITIONAL GRADING INFORMATION

Polish	EXCELLENT
Symmetry	EXCELLENT
Fluorescence	NON FLUORESCENT
Inscription(s)	1631 LG67752325

Comments: This Laboratory Grown Diamond was created by Chemical Vapor Deposition (CVD) growth process.
Type IIa



IGI

January 21, 2025
IGI Report No LG677523251
ROUND BRILLIANT

8.61 - 8.66 X 5.19 MM

8.61 - 8.66 X 5.19 MM
Carat Weight 2.39 CARATS

Clarity Grade

Cut Grade	IDEAL
Depth	60%

Table	60%
Table	60%

Grade
Medium To Slightly
Thick (Faceted)

Culet Pointed

Polish	EXCELLENT
Symmetry	EXCELLENT

Fluorescence

inscription(s)

Comments:
This Laboratory Grown Diamond was

created by Chemical Vapor Deposition (CVD) growth process.

Type IIa