

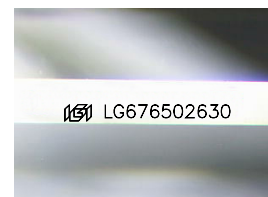
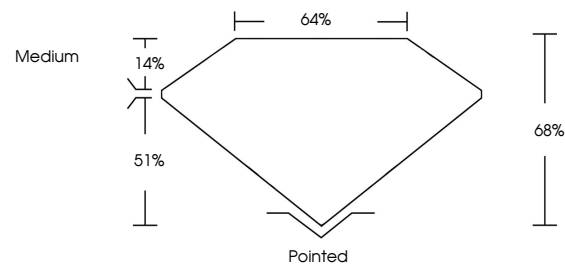


ELECTRONIC COPY

LABORATORY GROWN DIAMOND REPORT

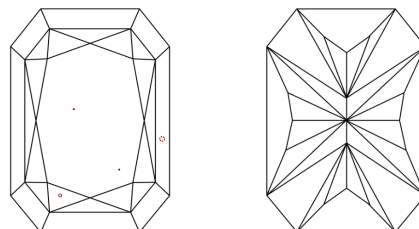
LG676502630
Report verification at lgi.org

PROPORTIONS



Sample Image Used

CLARITY CHARACTERISTICS



KEY TO SYMBOLS

Red symbols indicate internal characteristics.
Green symbols indicate external characteristics.

COLOR

D E F G H I J Faint Very Light Light

CLARITY

IF	VS ¹⁻²	VS ¹⁻²	SI ¹⁻²	I ¹⁻³
Internally Flawless	Very Very Slightly Included	Very Slightly Included	Slightly Included	Included

LABORATORY GROWN DIAMOND REPORT



January 13, 2025

IGI Report Number **LG676502630**Description **LABORATORY GROWN DIAMOND**

Shape and Cutting Style

CUT CORNERED
RECTANGULAR MODIFIED
BRILLIANT

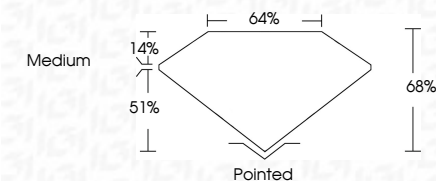
Measurements **12.01 X 8.45 X 5.75 MM**

GRADING RESULTS

Carat Weight **5.09 CARATS**

Color Grade E

Clarity Grade VS 1



ADDITIONAL GRADING INFORMATION

Polish **EXCELLENT**Symmetry **EXCELLENT**Fluorescence **NONE**Inscription(s) LG676502630

Comments: This Laboratory Grown Diamond was created by Chemical Vapor Deposition (CVD) growth process.
Type IIa



© IGI 2020, International Gemological Institute

FD - 10 20

www.igi.org

THIS DOCUMENT WAS PRODUCED WITH THE FOLLOWING SECURITY MEASURES: SPECIAL DOCUMENT PAPER, INK SCREENS, WATERMARK, BACKGROUND DESIGNS, HOLOGRAM AND OTHER SECURITY FEATURES NOT LISTED AND DO EXCEED DOCUMENT SECURITY INDUSTRY GUIDELINE

January 13, 2025	GI CORNERD REC1, MODIFIED BRILLIANT
GI REPORT NO LG576502630	
12101 X & 45 X 5.75 MM	
Carat Weight	5.09 CARATS
Color Grade	E
Clarity Grade	Vs 1
Depth	68%
Table	64%
Girdle	Medium
Culet	Pointed
Pash	EXCELLENT
Symmetry	EXCELLENT
Fluorescence	NONE
Inscriptions(s)	681 LG576502630
Comments:	
	Very Fine, Very Grown Diamond was treated by Chemical Vapor Deposition (CVD) growth process. Type IIa