



# INTERNATIONAL GEMOLOGICAL INSTITUTE

ELECTRONIC COPY

LG676501988



January 17, 2025

IGI Report Number LG676501988  
ROUND BRILLIANT  
LABORATORY GROWN DIAMOND  
5.71 - 5.74 X 3.57 MM

Carat Weight 0.71 CARAT  
Color Grade E  
Clarity Grade VVS 2  
Cut Grade EXCELLENT  
Polish VERY GOOD  
Symmetry VERY GOOD  
Fluorescence NONE  
Inscription(s) IGI LG676501988

Comments: This Laboratory Grown Diamond was created by Chemical Vapor Deposition (CVD) growth process. Type IIa

## LABORATORY GROWN DIAMOND REPORT

January 17, 2025

IGI Report Number

LG676501988

Description

LABORATORY GROWN DIAMOND

Shape and Cutting Style

ROUND BRILLIANT

Measurements

5.71 - 5.74 X 3.57 MM

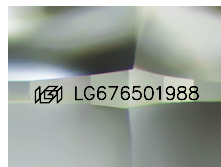
### GRADING RESULTS

Carat Weight 0.71 CARAT  
Color Grade E  
Clarity Grade VVS 2  
Cut Grade EXCELLENT

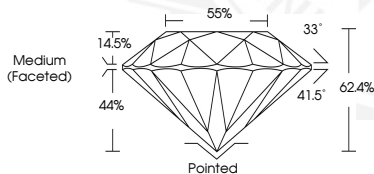
### ADDITIONAL GRADING INFORMATION

Polish VERY GOOD  
Symmetry VERY GOOD  
Fluorescence NONE  
Inscription(s) IGI LG676501988

Comments: This Laboratory Grown Diamond was created by Chemical Vapor Deposition (CVD) growth process. Type IIa



Sample Image Used



January 17, 2025

IGI Report Number LG676501988  
ROUND BRILLIANT  
LABORATORY GROWN DIAMOND  
5.71 - 5.74 X 3.57 MM

Carat Weight 0.71 CARAT  
Color Grade E  
Clarity Grade VVS 2  
Cut Grade EXCELLENT  
Polish VERY GOOD  
Symmetry VERY GOOD  
Fluorescence NONE  
Inscription(s) IGI LG676501988

Comments: This Laboratory Grown Diamond was created by Chemical Vapor Deposition (CVD) growth process. Type IIa



THIS DOCUMENT WAS PRODUCED WITH THE FOLLOWING SECURITY MEASURES: SPECIAL DOCUMENT PAPER, INK SCREENS, WATERMARK, BACKGROUND DESIGNS, HOLOGRAM AND OTHER SECURITY FEATURES NOT LISTED AND DO EXCEED DOCUMENT SECURITY INDUSTRY GUIDELINES.

For terms & conditions and to verify this report, please visit [www.igi.org](http://www.igi.org)