



ELECTRONIC COPY

LABORATORY GROWN DIAMOND REPORT

LG676501110
Report verification at igi.org

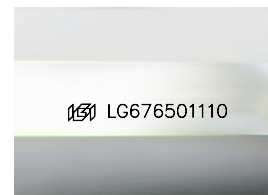
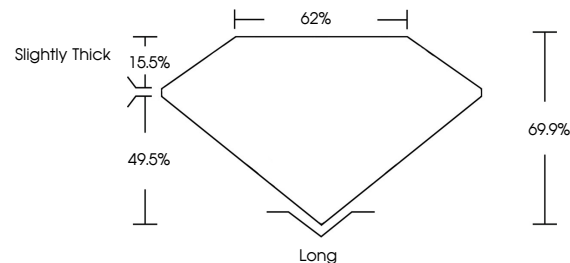
January 16, 2025	
IGI Report Number	LG676501110
Description	LABORATORY GROWN DIAMOND
Shape and Cutting Style	EMERALD CUT
Measurements	6.80 X 4.81 X 3.36 MM
GRADING RESULTS	
Carat Weight	1.07 CARAT
Color Grade	D
Clarity Grade	VS 2

ADDITIONAL GRADING INFORMATION

Polish	EXCELLENT
Symmetry	EXCELLENT
Fluorescence	NONE
Inscription(s)	 LG676501110

Comments: This Laboratory Grown Diamond was created by Chemical Vapor Deposition (CVD) growth process.
Type IIa

PROPORTIONS



Sample Image Used

COLOR

D E F G H I J Faint Very Light Light

CLARITY

IF	VS ¹⁻²	VS ¹⁻²	SI ¹⁻²	I ¹⁻³
Internally Flawless	Very Very Slightly Included	Very Slightly Included	Slightly Included	Included

LABORATORY GROWN DIAMOND REPORT



January 16, 2025	
IGI Report Number	LG676501110
Description	LABORATORY GROWN DIAMOND
Shape and Cutting Style	EMERALD CUT
Measurements	6.80 X 4.81 X 3.36 MM
GRADING RESULTS	
Carat Weight	1.07 CARAT
Color Grade	D
Clarity Grade	VS 2

ADDITIONAL GRADING INFORMATION

Polish	EXCELLENT
Symmetry	EXCELLENT
Fluorescence	NONE
Inscription(s)	 LG67601110
<p>Comments: This Laboratory Grown Diamond was created by Chemical Vapor Deposition (CVD) growth process.</p> <p>Type IIa</p>	



www.igi.org

© IGI 2020, International Gemological Institute

FD - 10 20



THIS DOCUMENT WAS PRODUCED WITH THE FOLLOWING SECURITY MEASURES: SPECIAL DOCUMENT PAPER, INK SCREENS, WATERMARK, BACKGROUND DESIGNS, HOLOGRAM AND OTHER SECURITY FEATURES NOT LISTED AND DO EXCEED DOCUMENT SECURITY INDUSTRY GUIDELINES

January 16, 2025
GI Report No LG676501110

GENERAL CUT G Report No. LG576501110 1.07 CARAT D V8.2 69.9% 62% Slightly Thick Long EXCELLENT EXCELLENT NONE 4681 G576501110	1.07 CARAT D V8.2 69.9% 62% Slightly Thick Long EXCELLENT EXCELLENT NONE 4681 G576501110
--	---

Comments:
This Laboratory Grown Diamond was
created by Chemical Vapor Deposition
(CVD) growth process.