

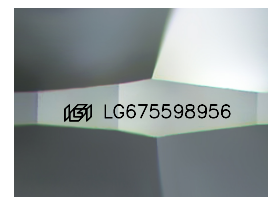
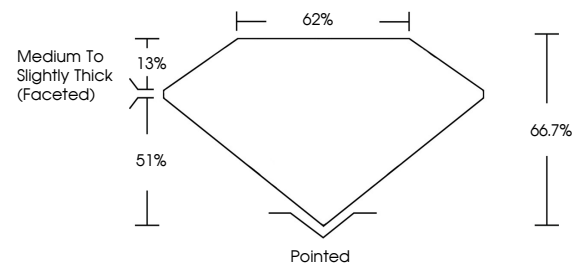


ELECTRONIC COPY

LABORATORY GROWN DIAMOND REPORT

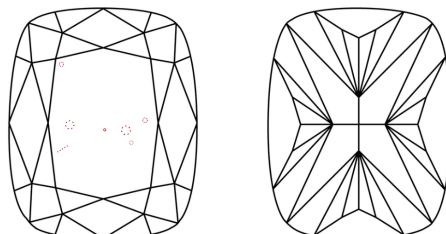
LG675598956
Report verification at igi.org

PROPORTIONS



Sample Image Used

CLARITY CHARACTERISTICS



KEY TO SYMBOLS

Red symbols indicate internal characteristics.
Green symbols indicate external characteristics.

COLOR

D E F G H I J Faint Very Light Light

CLARITY

IF	VS ¹⁻²	VS ¹⁻²	SI ¹⁻²	I ¹⁻³
Internally Flawless	Very Very Slightly Included	Very Slightly Included	Slightly Included	Included

LABORATORY GROWN DIAMOND REPORT



January 16, 2025

IGI Report Number **LG675598956**

Description	LABORATORY GROWN DIAMOND
-------------	--------------------------

Shape and Cutting Style **CUSHION BRILLIANT**

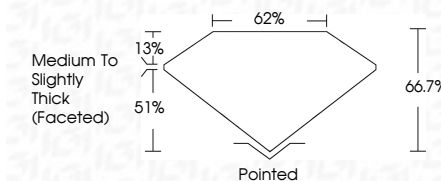
Measurements **8.57 X 6.16 X 4.11 MM**

GRADING RESULTS

Carat Weight 1.68 CARAT

Color Grade

Clarity Grade VS 2



ADDITIONAL GRADING INFORMATION

Polish **EXCELLENT**Symmetry **EXCELLENT**Fluorescence **NONE**Inscription(s) LG675598956

Comments: This Laboratory Grown Diamond was created by Chemical Vapor Deposition (CVD) growth process.
Type IIa



© IGI 2020, International Gemological Institute

FD - 10 20



THIS DOCUMENT WAS PRODUCED WITH THE FOLLOWING SECURITY MEASURES: SPECIAL DOCUMENT PAPER, INK SCREENS, WATERMARK, BACKGROUND DESIGNS, HOLOGRAM AND OTHER SECURITY FEATURES NOT LISTED AND DO EXCEED DOCUMENT SECURITY INDUSTRY GUIDELINES

www.igi.org

January 16, 2025
GJ Report No. 1G675598956

GIA Report No. 1207599985 1.68 CARAT E VS 2 66.7% 62% Medium To Slightly Thick (Faceted)	1.68 CARAT E VS 2 66.7% 62% Medium To Slightly Thick (Faceted)			
	Carat Weight Color Grade Clarity Grade Depth Table Girdle Culet Polish Symmetry Fluorescence Comments	1.68 CARAT E VS 2 66.7% 62% Medium To Slightly Thick (Faceted)	1.68 CARAT E VS 2 66.7% 62% Medium To Slightly Thick (Faceted)	1.68 CARAT E VS 2 66.7% 62% Medium To Slightly Thick (Faceted)

Comments:
This Laboratory Grown Diamond was created by Chemical Vapor Deposition (CVD) growth process.