

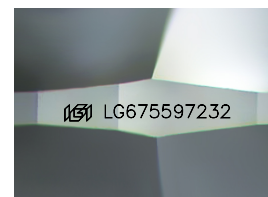
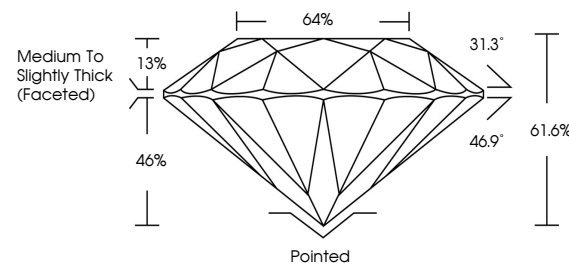


**ELECTRONIC COPY**

## LABORATORY GROWN DIAMOND REPORT

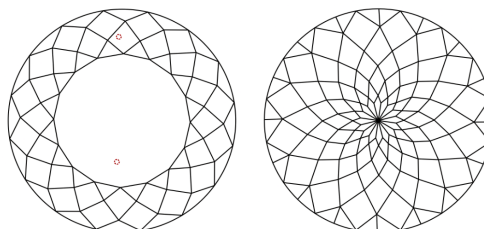
LG675597232  
Report verification at [igi.org](https://igi.org)

## PROPORTIONS



Sample Image Used

## CLARITY CHARACTERISTICS



### KEY TO SYMBOLS

Red symbols indicate internal characteristics.  
Green symbols indicate external characteristics.

## COLOR

D E F G H I J Faint Very Light Light

## CLARITY

IF      VWS<sup>1-2</sup>      VS<sup>1-2</sup>      SI<sup>1-2</sup>      I<sup>1-3</sup>

Internally Flawless	Very Very Slightly Included	Very Slightly Included	Slightly Included	Included
------------------------	--------------------------------	---------------------------	----------------------	----------

## LABORATORY GROWN DIAMOND REPORT



January 17, 2025

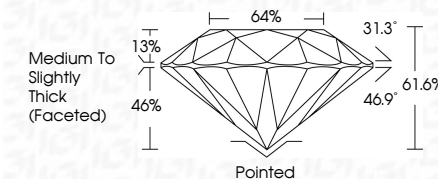
IGI Report Number **LG675597232**Description **LABORATORY GROWN DIAMOND**Shape and Cutting Style **ROUND MIXED CUT**

Measurements 7.31 - 7.29 X 4.49 MM

## GRADING RESULTS

Carat Weight **1.55 CARAT**

Color Grade F

Clarity Grade **VVS 2**

### ADDITIONAL GRADING INFORMATION

Polish VERY GOOD

Symmetry **EXCELLENT**Fluorescence NONEInscription(s)  LG675597232

Comments: This Laboratory Grown Diamond was created by Chemical Vapor Deposition (CVD) growth process.  
Type IIa



© IGI 2020, International Gemological Institute

FD - 10 20



THIS DOCUMENT WAS PRODUCED WITH THE FOLLOWING SECURITY MEASURES: SPECIAL DOCUMENT PAPER, INK SCREENS, WATERMARK, BACKGROUND DESIGNS, HOLOGRAM AND OTHER SECURITY FEATURES NOT LISTED AND DO EXCEED DOCUMENT SECURITY INDUSTRY GUIDELINES

**www.igi.org**

January 17, 2025  
GI Report No LG675597232  
ROUND MIXED CUT

7.31 - 7.29 x 4.49 MM	Carat Weight	1.55 CARAT
	Color Grade	F
	Clarity Grade	VVS 2
	Depth	61.6%
	Table	64%
	Grade	Medium To Slightly Thick (frosted)
	Culet	Pointed
	Polish	VERY GOOD
	Symmetry	EXCELLENT
	Fluorescence	NONE
	Comments	see LCA75527292

**Comments:**  
This Laboratory Grown Diamond was  
created by Chemical Vapor Deposition  
(CVD) growth process.