



**ELECTRONIC COPY**

## LABORATORY GROWN DIAMOND REPORT

January 16, 2025	
IGI Report Number	LG675591493
Description	LABORATORY GROWN DIAMOND
Shape and Cutting Style	ROUND BRILLIANT
Measurements	9.94 - 9.99 X 6.08 MM

## GRADING RESULTS

Carat Weight	3.71 CARATS
Color Grade	D
Clarity Grade	VVS 1
Cut Grade	IDEAL

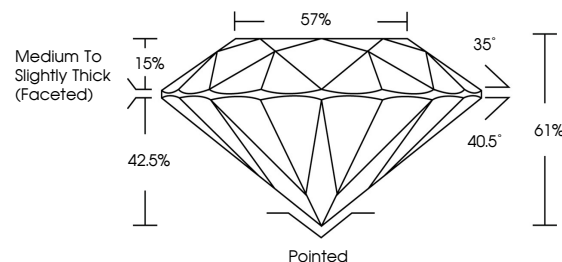
### ADDITIONAL GRADING INFORMATION

Polish	EXCELLENT
Symmetry	EXCELLENT
Fluorescence	NONE
Inscription(s)	15 LG675591493

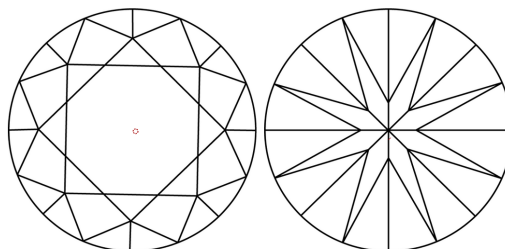
Comments: As Grown - No indication of post-growth treatment.  
This Laboratory Grown Diamond was created by High Pressure High Temperature (HPHT) growth process.  
Type II

LG675591493  
Report verification at [lgi.org](https://lgi.org)

## PROPORTIONS



## CLARITY CHARACTERISTICS



## KEY TO SYMBOLS

Red symbols indicate internal characteristics.  
Green symbols indicate external characteristics.



Sample Image Used

## COLOR

D E F G H I J Faint Very Light Light

## CLARITY

IF      VWS<sup>1-2</sup>      VS<sup>1-2</sup>      SI<sup>1-2</sup>      I<sup>1-3</sup>

Internally Flawless	Very Very Slightly Included	Very Slightly Included	Slightly Included	Included
------------------------	--------------------------------	---------------------------	----------------------	----------

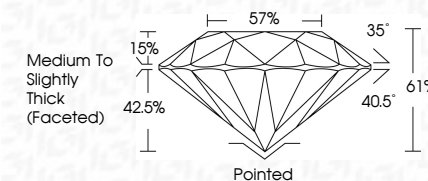
## LABORATORY GROWN DIAMOND REPORT



January 16, 2025	
IGI Report Number	LG675591493
Description	LABORATORY GROWN DIAMOND
Shape and Cutting Style	ROUND BRILLIANT
Measurements	9.94 - 9.99 X 6.08 MM

## GRADING RESULTS

Carat Weight	3.71 CARATS
Color Grade	D
Clarity Grade	VVS 1
Cut Grade	IDEAL



### ADDITIONAL GRADING INFORMATION

Polish	EXCELLENT
Symmetry	EXCELLENT
Fluorescence	NONE
Inscription(s)	<del>(G)</del> LG675591493
Comments:	As Grown - No indication of post-growth treatment. This Laboratory Grown Diamond was created by High Pressure High Temperature (HPHT) growth process. Type II



© IGI 2020, International Gemological Institute

FD - 10 20



THIS DOCUMENT WAS PRODUCED WITH THE FOLLOWING SECURITY MEASURES: SPECIAL DOCUMENT PAPER, INK SCREENS, WATERMARK, BACKGROUND DESIGNS, HOLOGRAM AND OTHER SECURITY FEATURES NOT LISTED AND DO EXCEED DOCUMENT SECURITY INDUSTRY GUIDELINE

**www.igi.org**

January 16, 2025  
GI Report No LG675591493  
ROUND BRILLIANT

9.94 - 9.99 X 6.08 MM	Color Grade	Clarity Grade	VVS 1	Medium To Slightly Thick (Faceted)	Pointed
Carat Weight	Cut Grade	IDEAL	EXCELLENT		
Depth	Table	61%	NONE		
Girdle		57%			
Culet	Polish				
Symmetry	Fluorescence				

**Comments:**  
As Grown - No indication of post-growth treatment.  
This Laboratory Grown Diamond was created by High Pressure High Temperature (HPHT) growth process.