



ELECTRONIC COPY

LG675589090
Report verification at igi.org



January 16, 2025

IGI Report Number **LG675589090**

Description **LABORATORY GROWN DIAMOND**

Shape and Cutting Style **ROUND BRILLIANT**

Measurements **7.32 - 7.38 X 4.53 MM**

GRADING RESULTS

Carat Weight **1.50 CARAT**

Color Grade **E**

Clarity Grade **VVS 2**

Cut Grade **IDEAL**

January 16, 2025

IGI Report Number **LG675589090**

Description **LABORATORY GROWN DIAMOND**

Shape and Cutting Style **ROUND BRILLIANT**

Measurements **7.32 - 7.38 X 4.53 MM**

GRADING RESULTS

Carat Weight **1.50 CARAT**

Color Grade **E**

Clarity Grade **VVS 2**

Cut Grade **IDEAL**

ADDITIONAL GRADING INFORMATION

Polish **EXCELLENT**

Symmetry **EXCELLENT**

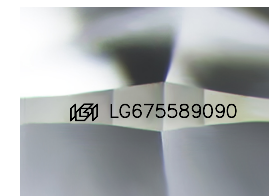
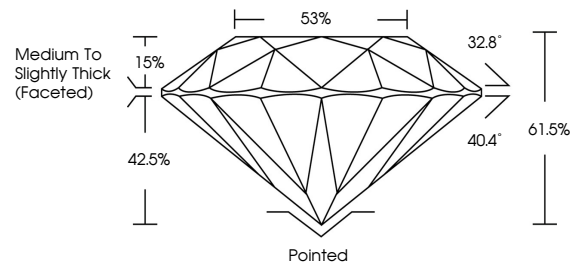
Fluorescence **NONE**

Inscription(s) **IGI LG675589090**

Comments: As Grown - No indication of post-growth treatment.

This Laboratory Grown Diamond was created by High Pressure High Temperature (HPHT) growth process. Type II

PROPORTIONS



Sample Image Used

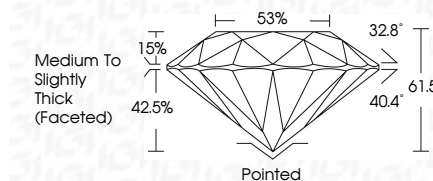
COLOR

D E F G H I J Faint Very Light Light

CLARITY

IF VS¹⁻² VS¹⁻² SI¹⁻² I¹⁻³

Internally Flawless Very Very Slightly Included Very Slightly Included Slightly Included Included



ADDITIONAL GRADING INFORMATION

Polish **EXCELLENT**

Symmetry **EXCELLENT**

Fluorescence **NONE**

Inscription(s) **IGI LG675589090**

Comments: As Grown - No indication of post-growth treatment.

This Laboratory Grown Diamond was created by High Pressure High Temperature (HPHT) growth process. Type II



IGI



January 16, 2025	IGI Report No LG675589090	1.50 CARAT	E	Pointed	EXCELLENT	EXCELLENT	NONE	IGI LG675589090
7.32 - 7.38 X 4.53 MM	ROUND BRILLIANT	Carat Weight	Color Grade	Clarity Grade	Depth	Table	Girdle	Culet
			VVS 2	IDEAL	61.5%	88%	Medium To Slightly Thick (Faceted)	Polish
								Symmetry
								Fluorescence
								Inscription(s)
								Comments:
								As Grown - No indication of post-growth treatment.
								This Laboratory Grown Diamond was created by High Pressure High Temperature (HPHT) growth process. Type II