



ELECTRONIC COPY

LG675575725
Report verification at igi.org



January 23, 2025

IGI Report Number **LG675575725**

Description **LABORATORY GROWN DIAMOND**

Shape and Cutting Style **HEART MODIFIED BRILLIANT**

Measurements **6.14 X 6.09 X 3.55 MM**

GRADING RESULTS

Carat Weight **1.03 CARAT**

Color Grade **FANCY VIVID YELLOW**

Clarity Grade **VS 2**

January 23, 2025
IGI Report Number **LG675575725**
Description **LABORATORY GROWN DIAMOND**
Shape and Cutting Style **HEART MODIFIED BRILLIANT**
Measurements **6.14 X 6.09 X 3.55 MM**

GRADING RESULTS

Carat Weight **1.03 CARAT**

Color Grade **FANCY VIVID YELLOW**

Clarity Grade **VS 2**

ADDITIONAL GRADING INFORMATION

Polish **EXCELLENT**

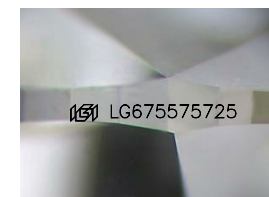
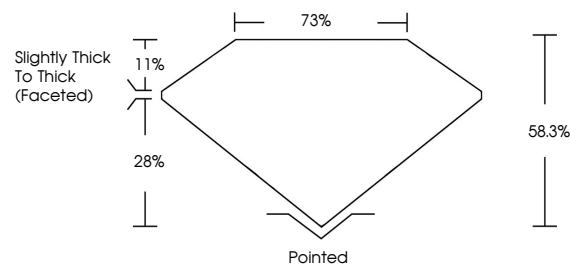
Symmetry **EXCELLENT**

Fluorescence **NONE**

Inscription(s) **IGI LG675575725**

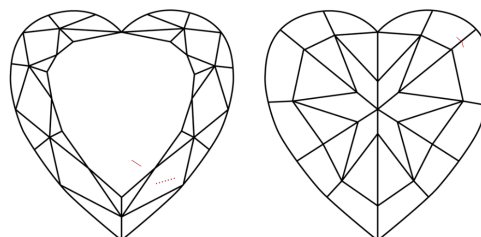
Comments: This Laboratory Grown Diamond was created by Chemical Vapor Deposition (CVD) growth process.

PROPORTIONS



Sample Image Used

CLARITY CHARACTERISTICS



KEY TO SYMBOLS

Red symbols indicate internal characteristics.
Green symbols indicate external characteristics.

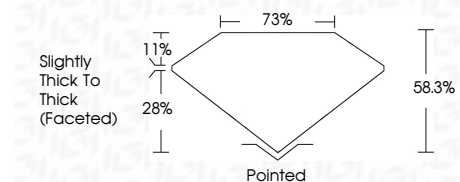
COLOR

D E F G H I J Faint Very Light Light

CLARITY

IF VS¹⁻² VS¹⁻² SI¹⁻² I¹⁻³

Internally Flawless Very Very Slightly Included Very Slightly Included Slightly Included Included



ADDITIONAL GRADING INFORMATION

Polish **EXCELLENT**

Symmetry **EXCELLENT**

Fluorescence **NONE**

Inscription(s) **IGI LG675575725**

Comments: This Laboratory Grown Diamond was created by Chemical Vapor Deposition (CVD) growth process.



IGI



January 23, 2025
IGI Report No **LG675575725**
HEART MODIFIED BRILLIANT
6.14 X 6.09 X 3.55 MM
Carat Weight **1.03 CARAT**
Color Grade **FANCY VIVID YELLOW**
Clarity Grade **VS 2**
Depth **58.3%**
Table **75%**
Girdle **Slightly Thick To Thick (Faceted)**
Culet **Pointed**
Polish **EXCELLENT**
Symmetry **EXCELLENT**
Fluorescence **NONE**
Inscription(s) **IGI LG675575725**
Comments: This Laboratory Grown Diamond was created by Chemical Vapor Deposition (CVD) growth process.