



**ELECTRONIC COPY**

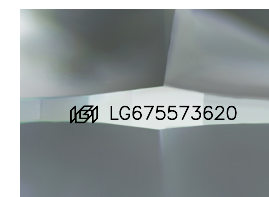
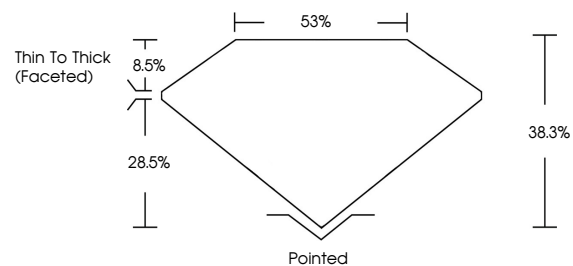
LG675573620  
Report verification at igi.org



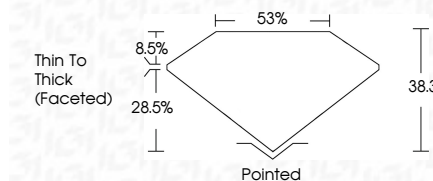
January 13, 2025  
IGI Report Number **LG675573620**  
Description **LABORATORY GROWN DIAMOND**  
Shape and Cutting Style **FREEFORM FACETED**  
Measurements **10.29 X 18.77 X 5.76 MM**  
**GRADING RESULTS**  
Carat Weight **6.37 CARATS**  
Color Grade **E**  
Clarity Grade **VVS 2**

January 13, 2025  
IGI Report Number **LG675573620**  
Description **LABORATORY GROWN DIAMOND**  
Shape and Cutting Style **FREEFORM FACETED**  
Measurements **10.29 X 18.77 X 5.76 MM**  
**GRADING RESULTS**  
Carat Weight **6.37 CARATS**  
Color Grade **E**  
Clarity Grade **VVS 2**

**PROPORTIONS**



Sample Image Used



**ADDITIONAL GRADING INFORMATION**

Polish **EXCELLENT**  
Symmetry **EXCELLENT**  
Fluorescence **NONE**  
Inscription(s) **IGI LG675573620**

Comments: This Laboratory Grown Diamond was created by Chemical Vapor Deposition (CVD) growth process.  
Type IIa

**ADDITIONAL GRADING INFORMATION**

Polish **EXCELLENT**  
Symmetry **EXCELLENT**  
Fluorescence **NONE**  
Inscription(s) **IGI LG675573620**  
Comments: This Laboratory Grown Diamond was created by Chemical Vapor Deposition (CVD) growth process.  
Type IIa

**COLOR**

D E F G H I J Faint Very Light Light

**CLARITY**

IF	VS <sup>1-2</sup>	VS <sup>1-2</sup>	SI <sup>1-2</sup>	I <sup>1-3</sup>
Internally Flawless	Very Very Slightly Included	Very Slightly Included	Slightly Included	Included



January 13, 2025  
IGI Report No LG675573620  
**FREEFORM FACETED**  
10.29 X 18.77 X 5.76 MM  
6.37 CARATS  
E  
VVS 2  
88.8%  
85%  
Thin To Thick (Faceted)  
Pointed  
EXCELLENT  
EXCELLENT  
NONE  
IGI LG675573620  
Comments: This Laboratory Grown Diamond was created by Chemical Vapor Deposition (CVD) growth process.  
Type IIa