



ELECTRONIC COPY

LABORATORY GROWN DIAMOND REPORT

January 16, 2025
IGI Report Number LG675568054
Description LABORATORY GROWN DIAMOND
Shape and Cutting Style CUT CORNERED RECTANGULAR MODIFIED BRILLIANT
Measurements 7.92 X 5.43 X 3.54 MM

GRADING RESULTS

Carat Weight 1.33 CARAT
Color Grade E
Clarity Grade VS 1

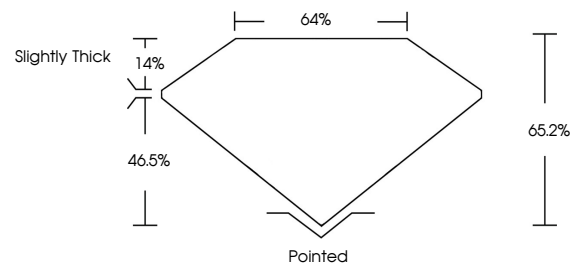
ADDITIONAL GRADING INFORMATION

Polish EXCELLENT
Symmetry EXCELLENT
Fluorescence NONE

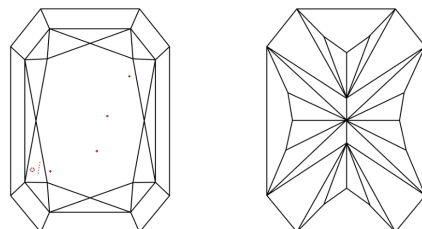
Inscription(s) LG675568054

Comments: This Laboratory Grown Diamond was created by Chemical Vapor Deposition (CVD) growth process.
Type IIa

PROPORTIONS

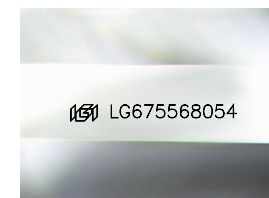


CLARITY CHARACTERISTICS



KEY TO SYMBOLS

Red symbols indicate internal characteristics.
Green symbols indicate external characteristics.



Sample Image Used

COLOR

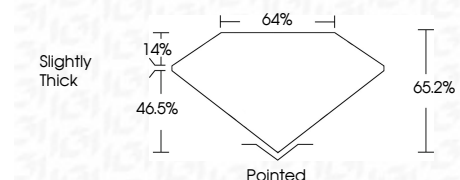
D E F G H I J Faint Very Light Light

CLARITY

IF WS¹⁻² VS¹⁻² SI¹⁻² I¹⁻³
Internally Flawless Very Very Slightly Included Very Slightly Included Slightly Included Included



January 16, 2025
IGI Report Number LG675568054
Description LABORATORY GROWN DIAMOND
Shape and Cutting Style CUT CORNERED RECTANGULAR MODIFIED BRILLIANT
Measurements 7.92 X 5.43 X 3.54 MM
GRADING RESULTS
Carat Weight 1.33 CARAT
Color Grade E
Clarity Grade VS 1



ADDITIONAL GRADING INFORMATION

Polish EXCELLENT
Symmetry EXCELLENT
Fluorescence NONE
Inscription(s) LG675568054
Comments: This Laboratory Grown Diamond was created by Chemical Vapor Deposition (CVD) growth process.
Type IIa



IGI



January 16, 2025
IGI Report No LG675568054
CUT CORNERED RECT. MODIFIED BRILLIANT
7.92 X 5.43 X 3.54 MM
1.33 CARAT E
VS 1
65.2% 46.5%
Slightly Thick
Pointed
EXCELLENT EXCELLENT
NONE
Inscription(s) LG675568054

Comments: This Laboratory Grown Diamond was created by Chemical Vapor Deposition (CVD) growth process.
Type IIa