



**ELECTRONIC COPY**

LG67556668  
Report verification at igi.org



January 24, 2025  
IGI Report Number **LG67556668**  
Description **LABORATORY GROWN DIAMOND**  
Shape and Cutting Style **CUSHION MODIFIED BRILLIANT**  
Measurements **13.45 X 10.32 X 6.79 MM**  
**GRADING RESULTS**  
Carat Weight **7.87 CARATS**  
Color Grade **FANCY VIVID BLUE**  
Clarity Grade **SI 1**

**LABORATORY GROWN DIAMOND REPORT**

January 24, 2025  
IGI Report Number **LG67556668**  
Description **LABORATORY GROWN DIAMOND**  
Shape and Cutting Style **CUSHION MODIFIED BRILLIANT**  
Measurements **13.45 X 10.32 X 6.79 MM**

**GRADING RESULTS**

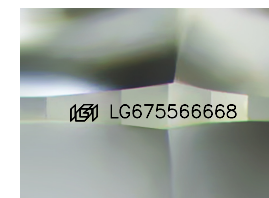
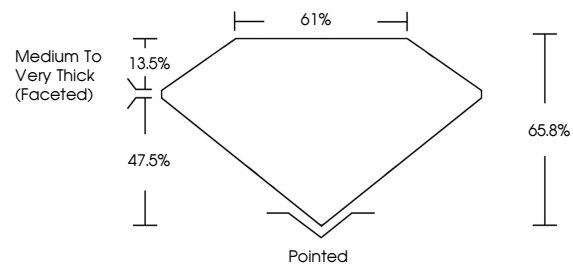
Carat Weight **7.87 CARATS**  
Color Grade **FANCY VIVID BLUE**  
Clarity Grade **SI 1**

**ADDITIONAL GRADING INFORMATION**

Polish **EXCELLENT**  
Symmetry **EXCELLENT**  
Fluorescence **NONE**  
Inscription(s) **IGI LG67556668**

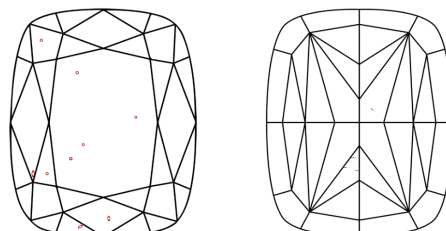
Comments: This Laboratory Grown Diamond was created by Chemical Vapor Deposition (CVD) growth process.  
Indications of post-growth treatment.

**PROPORTIONS**



Sample Image Used

**CLARITY CHARACTERISTICS**



**KEY TO SYMBOLS**

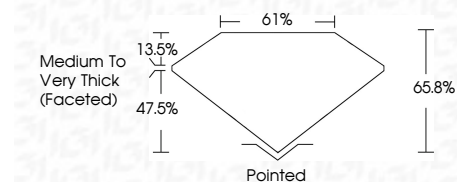
Red symbols indicate internal characteristics.  
Green symbols indicate external characteristics.

**COLOR**

D E F G H I J Faint Very Light Light

**CLARITY**

IF	VS <sup>1-2</sup>	VS <sup>1-2</sup>	SI <sup>1-2</sup>	I <sup>1-3</sup>
Internally Flawless	Very Very Slightly Included	Very Slightly Included	Slightly Included	Included



**ADDITIONAL GRADING INFORMATION**

Polish **EXCELLENT**  
Symmetry **EXCELLENT**  
Fluorescence **NONE**  
Inscription(s) **IGI LG67556668**  
Comments: This Laboratory Grown Diamond was created by Chemical Vapor Deposition (CVD) growth process.  
Indications of post-growth treatment.



January 24, 2025  
IGI Report No LG67556668  
CUSHION MODIFIED BRILLIANT

13.45 X 10.32 X 6.79 MM  
7.87 CARATS  
FANCY VIVID BLUE  
SI 1  
65.8%  
61%  
Medium to Very Thick (Faceted)  
Pointed  
EXCELLENT  
EXCELLENT  
NONE  
IGI LG67556668

Comments: This Laboratory Grown Diamond was created by Chemical Vapor Deposition (CVD) growth process.  
Indications of post-growth treatment.