



**ELECTRONIC COPY**

LG675565607  
Report verification at igi.org



January 23, 2025

IGI Report Number **LG675565607**

Description **LABORATORY GROWN DIAMOND**

Shape and Cutting Style **ROUND BRILLIANT**

Measurements **10.77 - 10.81 X 6.47 MM**

**GRADING RESULTS**

Carat Weight **4.58 CARATS**

Color Grade **E**

Clarity Grade **VS 2**

Cut Grade **IDEAL**

January 23, 2025  
IGI Report Number **LG675565607**  
Description **LABORATORY GROWN DIAMOND**  
Shape and Cutting Style **ROUND BRILLIANT**  
Measurements **10.77 - 10.81 X 6.47 MM**

**GRADING RESULTS**

Carat Weight **4.58 CARATS**

Color Grade **E**

Clarity Grade **VS 2**

Cut Grade **IDEAL**

**ADDITIONAL GRADING INFORMATION**

Polish **EXCELLENT**

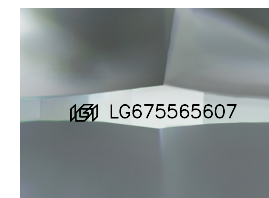
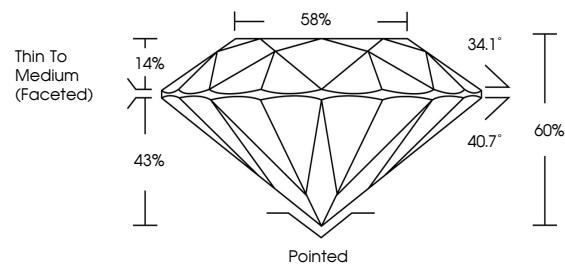
Symmetry **EXCELLENT**

Fluorescence **NONE**

Inscription(s) **LG675565607**

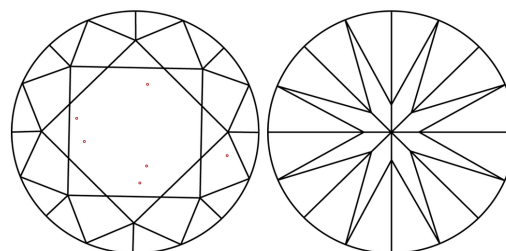
Comments: HEARTS & ARROWS  
This Laboratory Grown Diamond was created by  
Chemical Vapor Deposition (CVD) growth process.  
Type IIa

**PROPORTIONS**



Sample Image Used

**CLARITY CHARACTERISTICS**



**KEY TO SYMBOLS**

Red symbols indicate internal characteristics.  
Green symbols indicate external characteristics.



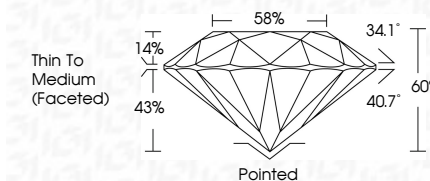
**COLOR**

D E F G H I J Faint Very Light Light

**CLARITY**

IF VS<sup>1-2</sup> VS<sup>1-2</sup> SI<sup>1-2</sup> I<sup>1-3</sup>

Internally Flawless Very Very Slightly Included Very Slightly Included Slightly Included Included



**ADDITIONAL GRADING INFORMATION**

Polish **EXCELLENT**

Symmetry **EXCELLENT**

Fluorescence **NONE**

Inscription(s) **LG675565607**

Comments: HEARTS & ARROWS  
This Laboratory Grown Diamond was created by  
Chemical Vapor Deposition (CVD) growth process.  
Type IIa



**IGI**



January 23, 2025  
IGI Report No **LG675565607**  
**ROUND BRILLIANT**  
Carat Weight **4.58 CARATS**  
Color Grade **E**  
Clarity Grade **VS 2**  
Depth **IDEAL**  
Table **60%**  
Girdle **68%**  
Thin To Medium (Faceted)  
Culet **Pointed**  
Polish **EXCELLENT**  
Symmetry **EXCELLENT**  
Fluorescence **NONE**  
Inscription(s) **LG675565607**  
Comments: **Hearts & Arrows**  
This Laboratory Grown Diamond was created by Chemical Vapor Deposition (CVD) growth process.  
Type IIa