



INTERNATIONAL GEMOLOGICAL INSTITUTE

ELECTRONIC COPY



January 22, 2025

IGI Report Number LG675561029

PRINCESS CUT

LABORATORY GROWN DIAMOND

3.73 X 3.66 X 2.66 MM

Carat Weight 0.33 CARAT

Color Grade F

Clarity Grade VS 1

Polish EXCELLENT

Symmetry VERY GOOD

Fluorescence NONE

Inscription(s) IGI LG675561029

Comments: This Laboratory Grown Diamond was created by Chemical Vapor Deposition (CVD) growth process. Type IIa

LABORATORY GROWN DIAMOND REPORT

January 22, 2025

IGI Report Number

LG675561029

Description

LABORATORY GROWN DIAMOND

Shape and Cutting Style

PRINCESS CUT

Measurements

3.73 X 3.66 X 2.66 MM

GRADING RESULTS

Carat Weight

0.33 CARAT

Color Grade

F

Clarity Grade

VS 1

ADDITIONAL GRADING INFORMATION

Polish

EXCELLENT

Symmetry

VERY GOOD

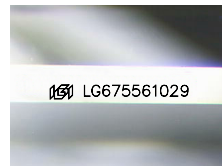
Fluorescence

NONE

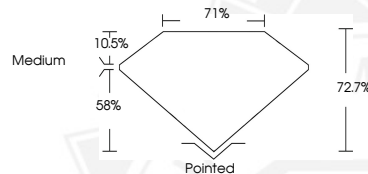
Inscription(s)

IGI LG675561029

Comments: This Laboratory Grown Diamond was created by Chemical Vapor Deposition (CVD) growth process. Type IIa



Sample Image Used



January 22, 2025

IGI Report Number LG675561029

PRINCESS CUT

LABORATORY GROWN DIAMOND

3.73 X 3.66 X 2.66 MM

Carat Weight 0.33 CARAT

Color Grade F

Clarity Grade VS 1

Polish EXCELLENT

Symmetry VERY GOOD

Fluorescence NONE

Inscription(s) IGI LG675561029

Comments: This Laboratory Grown Diamond was created by Chemical Vapor Deposition (CVD) growth process. Type IIa



THIS DOCUMENT WAS PRODUCED WITH THE FOLLOWING SECURITY MEASURES: SPECIAL DOCUMENT PAPER, INK SCREENS, WATERMARK, BACKGROUND DESIGN, HOLOGRAM AND OTHER SECURITY FEATURES NOT LISTED AND DO EXCEED DOCUMENT SECURITY INDUSTRY GUIDELINES.

For terms & conditions and to verify this report, please visit www.igi.org