

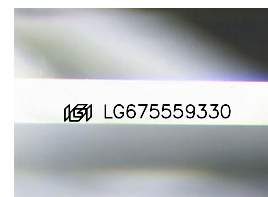
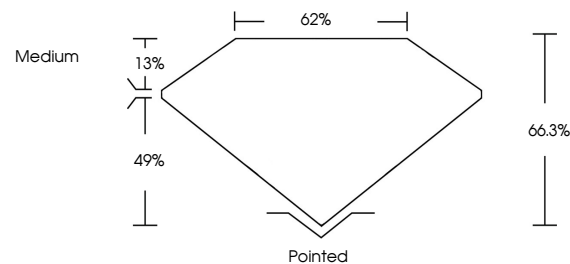


ELECTRONIC COPY

LABORATORY GROWN DIAMOND REPORT

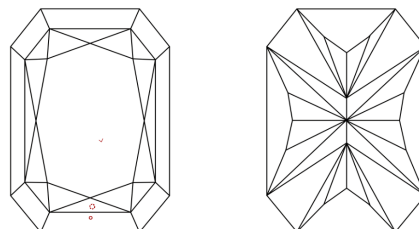
LG675559330
Report verification at igi.org

PROPORTIONS



Sample Image Used

CLARITY CHARACTERISTICS



KEY TO SYMBOLS

Red symbols indicate internal characteristics.
Green symbols indicate external characteristics.

COLOR

D E F G H I J Faint Very Light Light

CLARITY

IF	VS ¹⁻²	VS ¹⁻²	SI ¹⁻²	I ¹⁻³
Internally Flawless	Very Very Slightly Included	Very Slightly Included	Slightly Included	Included

LABORATORY GROWN DIAMOND REPORT



January 11, 2025

IGI Report Number **LG675559330**Description **LABORATORY GROWN DIAMOND**

Shape and Cutting Style

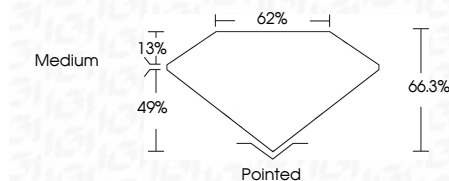
Measurements **8.00 X 5.72 X 3.79 MM**

GRADING RESULTS

Carat Weight **1.51 CARAT**

Color Grade D

Clarity Grade VS 1



ADDITIONAL GRADING INFORMATION

Polish **EXCELLENT**Symmetry **EXCELLENT**Fluorescence **NONE**Inscription(s) LG675559330

Comments: This Laboratory Grown Diamond was created by Chemical Vapor Deposition (CVD) growth process.
Type IIa



© IGI 2020, International Gemological Institute

FD - 10 20

www.igi.org

THIS DOCUMENT WAS PRODUCED WITH THE FOLLOWING SECURITY MEASURES: SPECIAL DOCUMENT PAPER, INK SCREENS, WATERMARK, BACKGROUND DESIGNS, HOLOGRAM AND OTHER SECURITY FEATURES NOT LISTED AND DO EXCEED DOCUMENT SECURITY INDUSTRY GUIDELINE

January 11, 2025	1.51 CARAT
GI Report No. LG27559330	D
CUT CORNERED RECT. MODIFIED BRILLIANT	VS 1
0.00 X 5.72 X 3.79 MM	66.5%
	62%
	Medium
	Polished
	EXCELLENT
	EXCELLENT
	NONE
	6891 LG27559330

Comments: This is a Fancy Gray Crown Diamond was created by Chemical Vapor Deposition (CVD) growth process.

Type IIa