



**ELECTRONIC COPY**

LG675554334  
Report verification at igi.org



January 16, 2025  
IGI Report Number **LG675554334**  
Description **LABORATORY GROWN DIAMOND**  
Shape and Cutting Style **PEAR MODIFIED BRILLIANT**  
Measurements **9.25 X 5.77 X 3.43 MM**

**GRADING RESULTS**

Carat Weight **1.09 CARAT**  
Color Grade **E**  
Clarity Grade **VVS 2**

January 16, 2025  
IGI Report Number **LG675554334**  
Description **LABORATORY GROWN DIAMOND**  
Shape and Cutting Style **PEAR MODIFIED BRILLIANT**  
Measurements **9.25 X 5.77 X 3.43 MM**

**GRADING RESULTS**

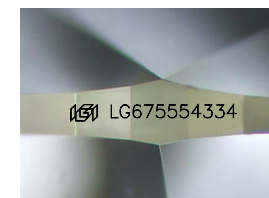
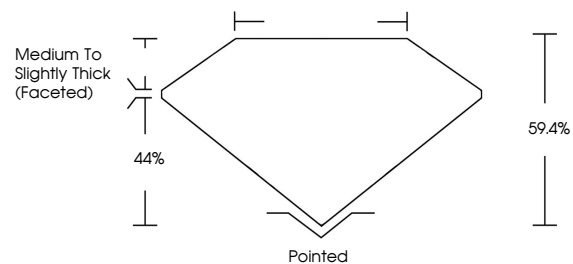
Carat Weight **1.09 CARAT**  
Color Grade **E**  
Clarity Grade **VVS 2**

**ADDITIONAL GRADING INFORMATION**

Polish **EXCELLENT**  
Symmetry **EXCELLENT**  
Fluorescence **NONE**  
Inscription(s) **IGI LG675554334**

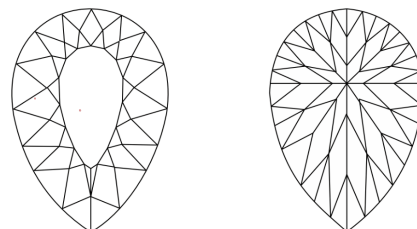
Comments: This Laboratory Grown Diamond was created by Chemical Vapor Deposition (CVD) growth process.  
Type IIa

**PROPORTIONS**



Sample Image Used

**CLARITY CHARACTERISTICS**



**KEY TO SYMBOLS**

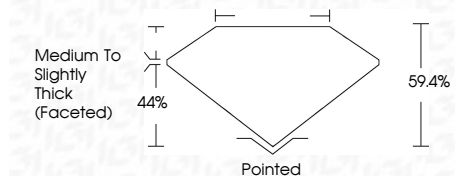
Red symbols indicate internal characteristics.  
Green symbols indicate external characteristics.

**COLOR**

D E F G H I J Faint Very Light Light

**CLARITY**

IF	VS <sup>1-2</sup>	VS <sup>1-2</sup>	SI <sup>1-2</sup>	I <sup>1-3</sup>
Internally Flawless	Very Very Slightly Included	Very Slightly Included	Slightly Included	Included



**ADDITIONAL GRADING INFORMATION**

Polish **EXCELLENT**  
Symmetry **EXCELLENT**  
Fluorescence **NONE**  
Inscription(s) **IGI LG675554334**  
Comments: This Laboratory Grown Diamond was created by Chemical Vapor Deposition (CVD) growth process.  
Type IIa



January 16, 2025  
IGI Report No LG675554334  
**PEAR MODIFIED BRILLIANT**  
9.25 X 5.77 X 3.43 MM  
1.09 CARAT  
E  
VVS 2  
59.4%  
44%  
Medium to Slightly Thick (Faceted)  
Pointed  
EXCELLENT  
EXCELLENT  
NONE  
IGI LG675554334  
Comments: This Laboratory Grown Diamond was created by Chemical Vapor Deposition (CVD) growth process.  
Type IIa