

**ELECTRONIC COPY**

## LABORATORY GROWN DIAMOND REPORT

January 11, 2025	
IGI Report Number	LG675551243
Description	LABORATORY GROWN DIAMOND
Shape and Cutting Style	CUT CORNERED RECTANGULAR MODIFIED BRILLIANT
Measurements	7.05 X 5.01 X 3.41 MM

## GRADING RESULTS

Carat Weight	1.05 CARAT
Color Grade	D
Clarity Grade	VS 1

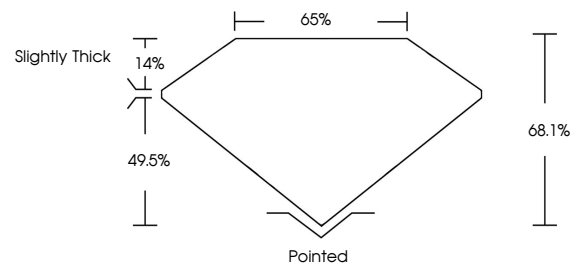
### ADDITIONAL GRADING INFORMATION

Polish	EXCELLENT
Symmetry	EXCELLENT
Fluorescence	NONE
Inscription(s)	 LG675551243

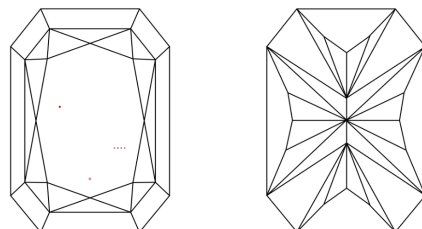
Comments: This Laboratory Grown Diamond was created by Chemical Vapor Deposition (CVD) growth process.  
Type IIa

LG675551243  
Report verification at [igi.org](https://igi.org)

## PROPORTIONS

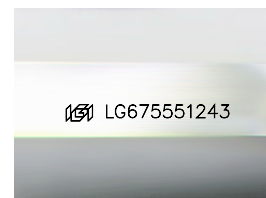


## CLARITY CHARACTERISTICS



### KEY TO SYMBOLS

Red symbols indicate internal characteristics.  
Green symbols indicate external characteristics.



Sample Image Used

## COLOR

D E F G H I J Faint Very Light Light

## CLARITY

IF	VS <sup>1-2</sup>	VS <sup>1-2</sup>	SI <sup>1-2</sup>	I <sup>1-3</sup>
Internally Flawless	Very Very Slightly Included	Very Slightly Included	Slightly Included	Included

## LABORATORY GROWN DIAMOND REPORT

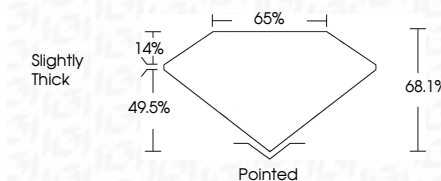


January 11, 2025	
IGI Report Number	LG675551243
Description	LABORATORY GROWN DIAMOND
Shape and Cutting Style	CUT CORNERED RECTANGULAR MODIFIED BRILLIANT

Measurements **7.05 X 5.01 X 3.41 MM**

## GRADING RESULTS

Carat Weight	1.05 CARAT
Color Grade	D
Clarity Grade	VS 1



### ADDITIONAL GRADING INFORMATION

Polish	EXCELLENT
Symmetry	EXCELLENT
Fluorescence	NONE
Inscription(s)	<del>LG6</del> LG675551243
<p>Comments: This Laboratory Grown Diamond was created by Chemical Vapor Deposition (CVD) growth process.</p> <p>Type IIa</p>	



© IGI 2020, International Gemological Institute

FD - 10 20

**www.igi.org**

THIS DOCUMENT WAS PRODUCED WITH THE FOLLOWING SECURITY MEASURES: SPECIAL DOCUMENT PAPER, INK SCREENS, WATERMARK BACKGROUND DESIGNS, HOLOGRAM AND OTHER SECURITY FEATURES NOT LISTED AND DO EXCEED DOCUMENT SECURITY INDUSTRY GUIDELINES

January 11, 2025	Report No. LG575551243	OUT CORNERED RECT. MODIFIED BRILLIANT CUT
0.05 X 0.07 X 3.41 MM	Color Grade	1.05 CARAT
Clarity Grade	VS 1	D
Depth	68.1%	
Table	65%	
Girdle	Slightly Thick	
Culet	Pointed	
Polish	Excellent	
Symmetry	Excellent	
Fluorescence	None	
Inscriptions(s)	1691 LG575551243	

Comments:  
 The Laboratory Grown Diamond was  
 produced using the Chemical Vapor Deposition  
 (CVD) growth process.  
 Type IIA