



ELECTRONIC COPY

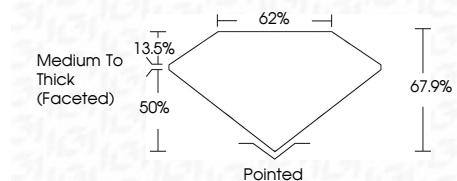
LG675544450
Report verification at igi.org



January 17, 2025
IGI Report Number **LG675544450**
Description **LABORATORY GROWN DIAMOND**
Shape and Cutting Style **SQUARE CUSHION BRILLIANT**
Measurements **6.51 X 6.32 X 4.29 MM**

GRADING RESULTS

Carat Weight **1.38 CARAT**
Color Grade **D**
Clarity Grade **VS 2**

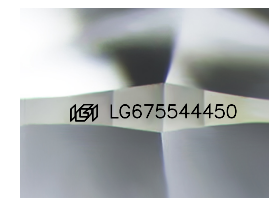


ADDITIONAL GRADING INFORMATION

Polish **VERY GOOD**
Symmetry **VERY GOOD**
Fluorescence **NONE**
Inscription(s) **IGI LG675544450**
Comments: As Grown - No indication of post-growth treatment.
This Laboratory Grown Diamond was created by High Pressure High Temperature (HPHT) growth process.
Type II

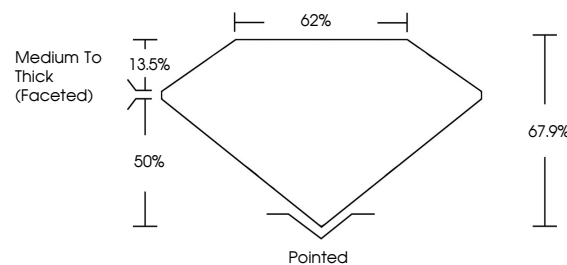


January 17, 2025
IGI Report No LG675544450
SQUARE CUSHION BRILLIANT
6.51 X 6.32 X 4.29 MM
1.38 CARAT
D
VS 2
67.9%
62%
Medium To Thick (Faceted)
Pointed
VERY GOOD
VERY GOOD
NONE
IGI LG675544450
Comments: As Grown - No indication of post-growth treatment.
This Laboratory Grown Diamond was created by High Pressure High Temperature (HPHT) growth process.
Type II

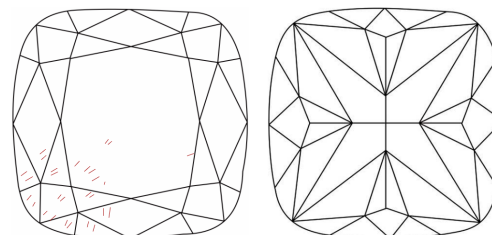


Sample Image Used

PROPORTIONS



CLARITY CHARACTERISTICS



KEY TO SYMBOLS

Red symbols indicate internal characteristics.
Green symbols indicate external characteristics.

COLOR

D E F G H I J Faint Very Light Light

CLARITY

IF	VS ¹⁻²	VS ¹⁻²	SI ¹⁻²	I ¹⁻³
Internally Flawless	Very Very Slightly Included	Very Slightly Included	Slightly Included	Included

