



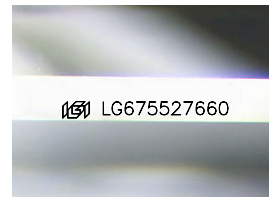
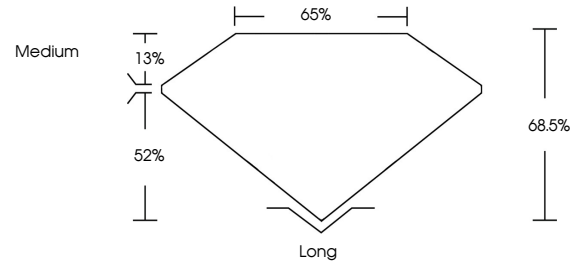
**INTERNATIONAL  
GEMOLOGICAL  
INSTITUTE**

**ELECTRONIC COPY**

## LABORATORY GROWN DIAMOND REPORT

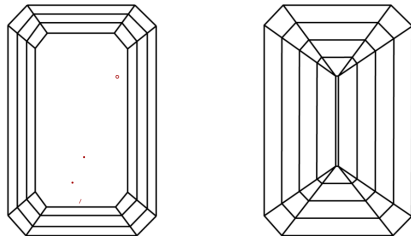
LG675527660  
Report verification at [igi.org](https://igi.org)

## PROPORTIONS



Sample Image Used

## CLARITY CHARACTERISTICS



## KEY TO SYMBOLS

Red symbols indicate internal characteristics.  
Green symbols indicate external characteristics.

## COLOR

D E F G H I J Faint Very Light Light

## CLARITY

IF      WS<sup>1-2</sup>      VS<sup>1-2</sup>      SI<sup>1-2</sup>      I<sup>1-3</sup>

|                        |                                |                           |                      |          |
|------------------------|--------------------------------|---------------------------|----------------------|----------|
| Internally<br>Flawless | Very Very<br>Slightly Included | Very<br>Slightly Included | Slightly<br>Included | Included |
|------------------------|--------------------------------|---------------------------|----------------------|----------|



© IGI 2020, International Gemological Institute

FD - 10 20

**www.igi.org**

LABORATORY GROWN DIAMOND REPORT



January 9, 2025

IGI Report Number LG675527660

|             |                          |
|-------------|--------------------------|
| Description | LABORATORY GROWN DIAMOND |
|-------------|--------------------------|

Shape and Cutting Style **EMERALD CUT**

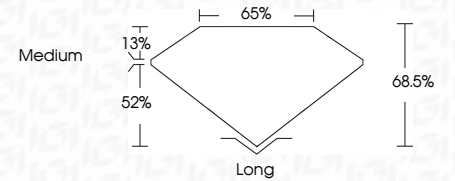
Measurements 10.52 X 7.50 X 5.14 MM

## GRADING RESULTS

Carat Weight **4.02 CARATS**

|             |   |
|-------------|---|
| Color Grade | E |
|-------------|---|

Clarity Grade VS 1



### ADDITIONAL GRADING INFORMATION

Polish **EXCELLENT**Symmetry **EXCELLENT**Fluorescence **NONE**Inscription(s)  LG675527660

Comments: This Laboratory Grown Diamond was created by Chemical Vapor Deposition (CVD) growth process.  
Type IIa



IGI

|  |                           |
|--|---------------------------|
| January 9, 2025  | IGI Report No. IGR5952760 |
| GENERAL CUT  |                           |
| 10.62 X 7.80 X 5.14 MM   | 4.02 CARATS               |
| Color Weight   | VS 1                      |
| Color Grade  | 68.6%                     |
|  | 65%                       |
| Clarity Grade  | Medium                    |
| Culet  | Long                      |
| Polish   | EXCELLENT                 |
| Symmetry   | EXCELLENT                 |
| Fluorescence   | NONE                      |
| Inscriptions(s)  | IGI 1G5952760             |
| Comments:<br>This Laboratory Grown Diamond was<br>certified by Chemical Vapor Deposition<br>(CVD) Growth Process.<br>Type IIa. |                           |

This Laboratory Grown Diamond was created by Chemical Vapor Deposition (CVD) growth process.  
Type IIa